



BASEBALL

Spring 2025



UNDER ARMOUR

**THE ONLY
WAY IS
THROUGH.**





VISION

TO INSPIRE YOU WITH PERFORMANCE
SOLUTIONS YOU NEVER KNEW
YOU NEEDED BUT CAN'T IMAGINE
LIVING WITHOUT.

MISSION

UNDER ARMOUR
MAKES YOU BETTER.

BASEBALL —

- 002 BASEBALL UNIFORMS
- 022 BASEBALL APPAREL
- 027 BASEBALL SOCKS
- 028 BASEBALL FOOTWEAR
- 030 BASEBALL BATTING GLOVES
- 032 BASEBALL BAGS
- 034 BASEBALL HEADWEAR
- 044 BASEBALL EYEWEAR
- 050 MEN'S AF TRAINING
- 060 UNIFORM ORDERING INFO

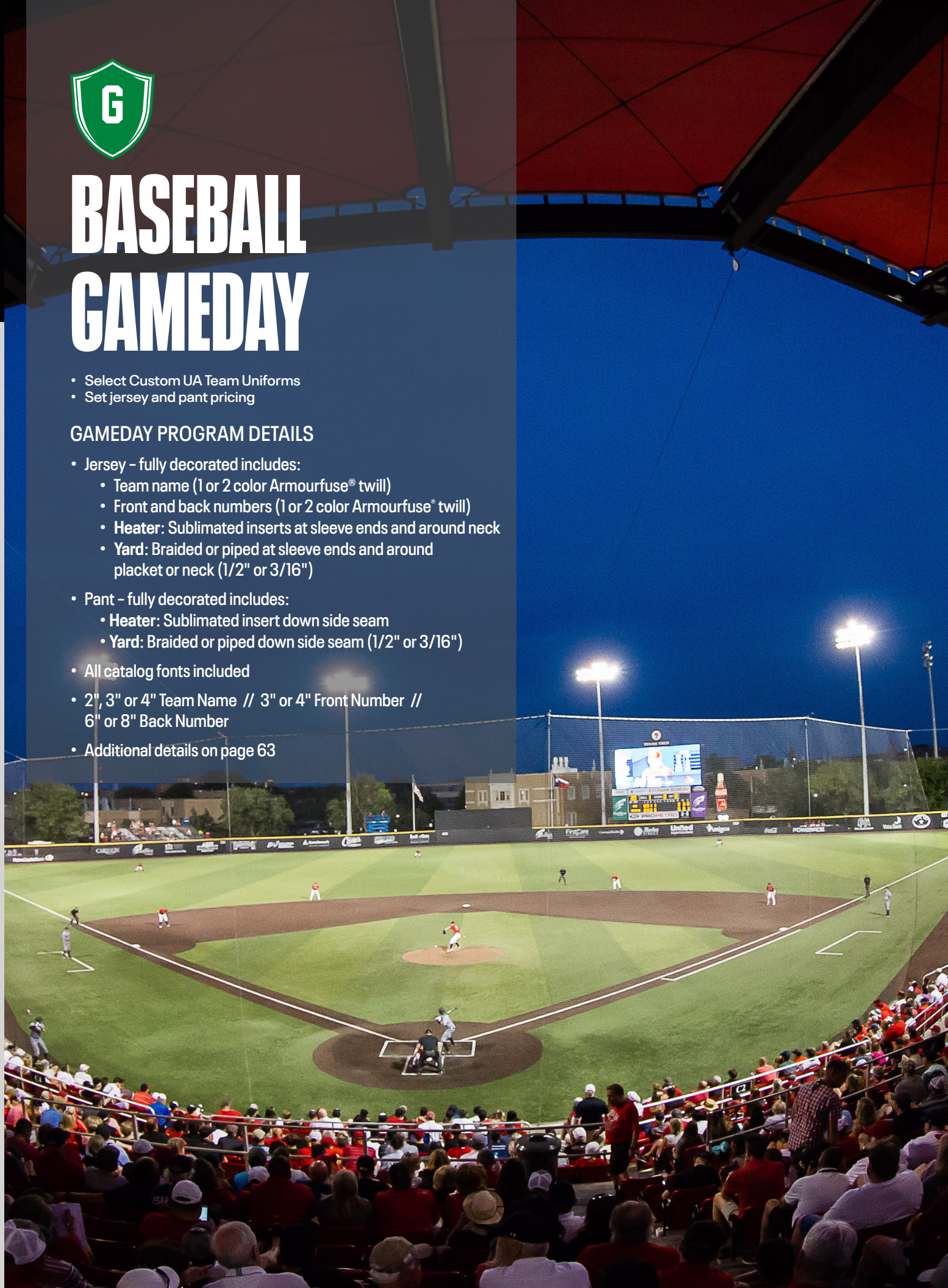


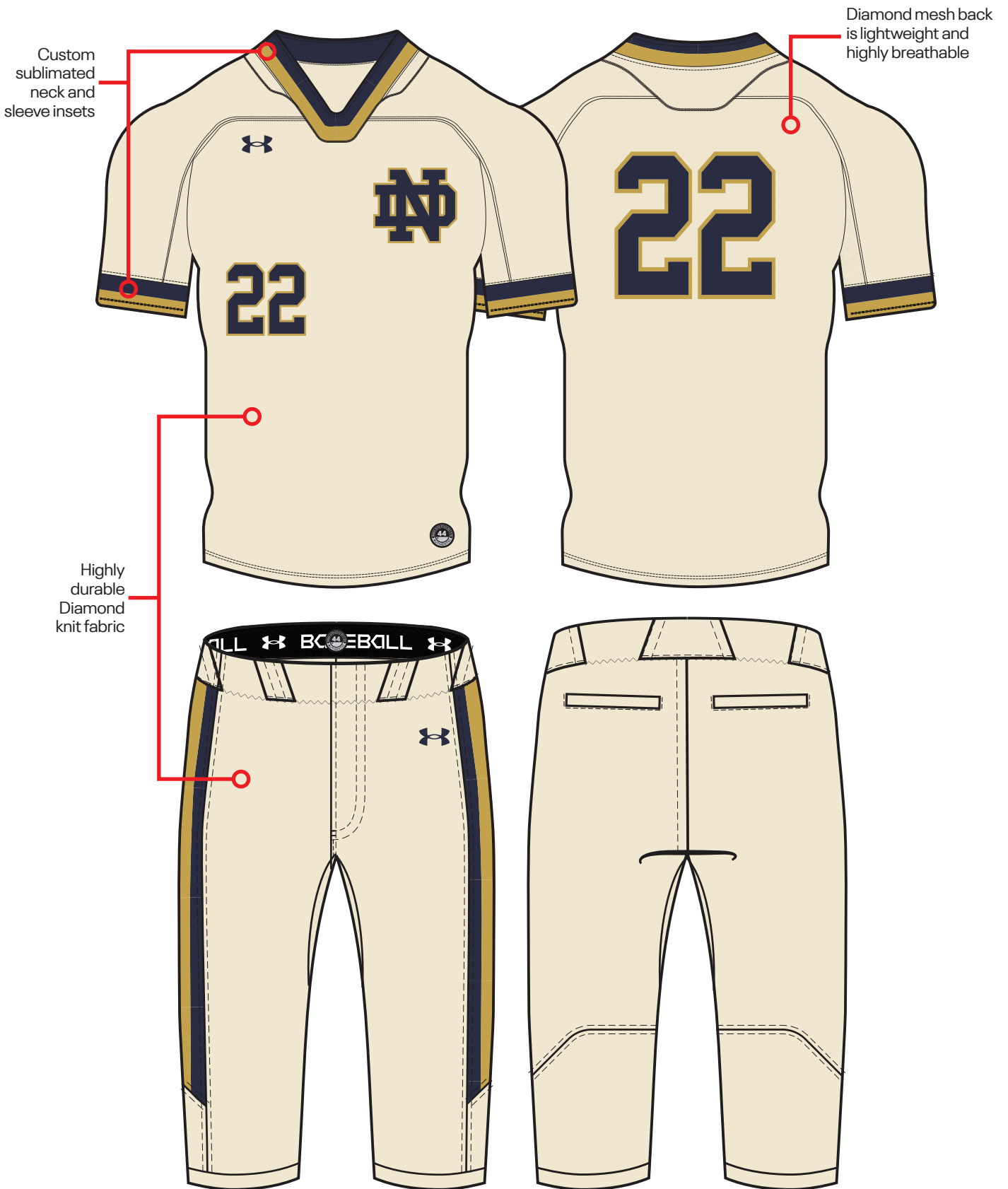
BASEBALL GAMEDAY

- Select Custom UA Team Uniforms
- Set jersey and pant pricing

GAMEDAY PROGRAM DETAILS

- Jersey - fully decorated includes:
 - Team name (1 or 2 color Armourfuse® twill)
 - Front and back numbers (1 or 2 color Armourfuse® twill)
 - Heater: Sublimated inserts at sleeve ends and around neck
 - Yard: Braided or piped at sleeve ends and around placket or neck (1/2" or 3/16")
- Pant - fully decorated includes:
 - Heater: Sublimated insert down side seam
 - Yard: Braided or piped down side seam (1/2" or 3/16")
- All catalog fonts included
- 2", 3" or 4" Team Name // 3" or 4" Front Number // 6" or 8" Back Number
- Additional details on page 63





HEATER JERSEYS

SM-2XL, OVERSIZE 3XL

2-BUTTON	SIZE	FABRIC	PRICE
UBO30JM (M)	SM-2XL	SOLID	\$172.00
UBP30JM (M)	SM-2XL	PINSTRIPES	\$202.00
V-NECK	DESIGN	FABRIC	PRICE
UBO29JM (M)	SM-2XL	SOLID	\$172.00
UBP29JM (M)	SM-2XL	PINSTRIPES	\$202.00

- 100% Polyester
- Diamond Knit Front + Diamond Mesh Back (Pinstripe version = Diamond Knit Back)
- Functional top two buttons or modern v-neck construction
- Sublimated inserts around neck and sleeves
- Size LG Measurements: front body length 26.50", sleeve length from center neck 16", across chest width from under armhole 19.5"
- Modern raglan sleeves shaped to increase shoulder mobility and full mesh back for overall comfort and breathability

OVERSIZED SURCHARGE +\$5 PER SIZE



HEATER PANTS

SM-2XL, OVERSIZE 3XL

TAPERED	DESIGN	FABRIC	PRICE
UBO22PM (M)	SM-2XL	SOLID	\$146.00
UBP22PM (M)	SM-2XL	PINSTRIPES	\$176.00
RELAXED	DESIGN	FABRIC	PRICE
UBO21PM (M)	SM-2XL	SOLID	\$146.00
UBP21PM (M)	SM-2XL	PINSTRIPES	\$176.00
KNICKER	DESIGN	FABRIC	PRICE
UBO35PM (M)	SM-2XL	SOLID	\$146.00
UBP35PM (M)	SM-2XL	PINSTRIPES	\$176.00

- 100% Polyester - Diamond Knit
- Relaxed Pant inseam = 32"
- Tapered Pant inseam = 30"
- Knicker inseam = 18"
- 2-ply reinforced knees + hamstrings
- Sublimated side inserts
- Custom inseams available on all pants -2" or +2" (no charge)

OVERSIZED SURCHARGE +\$5 PER SIZE



2-BUTTON

SHOWN WITH TAPERED PANT

V-NECK

SHOWN WITH KNICKER PANT

JERSEY AND PANT COLORS:

WHT	VWH	BBG	GPH	BLK	PUR	MDN
RYL	VBL	FGR	DKO	RED	MAR	CRD

PINSTRIPES:

WHT/BLK	WHT/PUR	WHT/MDN	WHT/RYL	WHT/VBL	WHT/FGR	WHT/DKO	WHT/RED	WHT/MAR	WHT/CRD
BBG/BLK	WHT/PUR	WHT/MDN	WHT/RYL	WHT/VBL	WHT/FGR	WHT/DKO	WHT/RED	WHT/MAR	WHT/CRD
VWH/BLK	WHT/PUR	WHT/MDN	WHT/RYL	WHT/VBL	WHT/FGR	WHT/DKO	WHT/RED	WHT/MAR	WHT/CRD

- Dyed ground with sublimated pinstripes

YARD FULL PLACKET JERSEY

SM-2XL, OVERSIZE 3XL

FULL PLACKET	DESIGN	FABRIC	PRICE
UBO24JM (M)	SM-2XL	SOLID	\$166.00
UBP24JM (M)	SM-2XL	PINSTRIPES	\$196.00

- 100% Polyester
- Diamond Knit Front + Diamond Mesh Back (Pinstripe version = Diamond Knit Back)
- Full Placket functional buttons down entire front closure
- Size LG Measurements: front body length 26.50", sleeve length from center neck 16", across chest width from under armhole 19.5"
- Modern raglan sleeves shaped to increase shoulder mobility and full mesh back for overall comfort and breathability

OVERSIZED SURCHARGE +\$5 PER SIZE



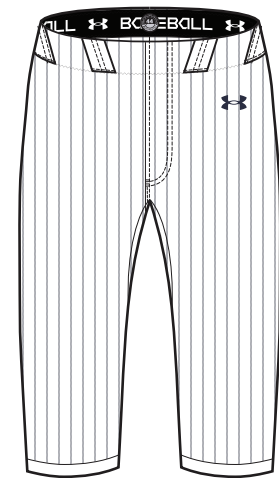
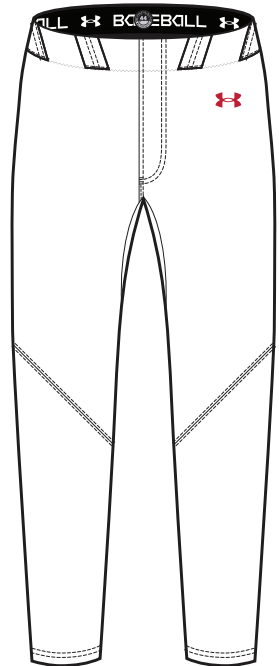
YARD PANTS

SM-2XL, OVERSIZE 3XL

TAPERED	DESIGN	FABRIC	PRICE
UBO26PM (M)	SM-2XL	SOLID	\$136.00
UBP26PM (M)	SM-2XL	PINSTRIPES	\$166.00
RELAXED	DESIGN	FABRIC	PRICE
UBO25PM (M)	SM-2XL	SOLID	\$136.00
UBP25PM (M)	SM-2XL	PINSTRIPES	\$166.00
KNICKER	DESIGN	FABRIC	PRICE
UBO36PM (M)	SM-2XL	SOLID	\$136.00
UBP36PM (M)	SM-2XL	PINSTRIPES	\$166.00

- 100% Polyester - Diamond Knit
- Relaxed Pant inseam = 32"
Tapered Pant inseam = 30"
Knicker inseam = 18"
- 2-ply reinforced knees + hamstrings
- Custom inseams available on all pants
-2" or +2" (no charge)

OVERSIZED SURCHARGE +\$5 PER SIZE



FULL PLACKET

SHOWN WITH TAPERED PANT

FULL PLACKET

SHOWN WITH KNICKER PANT

JERSEY AND PANT COLORS:

WHT	VWH	BBG	GPH	BLK	PUR	MDN
RYL	VBL	FGR	DKO	RED	MAR	CRD

PINSTRIPES:

WHT/BLK	WHT/PUR	WHT/MDN	WHT/RYL	WHT/VBL	WHT/FGR	WHT/DKO	WHT/RED	WHT/MAR	WHT/CRD
BBG/BLK	WHT/PUR	WHT/MDN	WHT/RYL	WHT/VBL	WHT/FGR	WHT/DKO	WHT/RED	WHT/MAR	WHT/CRD
VWH/BLK	WHT/PUR	WHT/MDN	WHT/RYL	WHT/VBL	WHT/FGR	WHT/DKO	WHT/RED	WHT/MAR	WHT/CRD

- Dyed ground with sublimated pinstripes







BASEBALL ARMOURFUSE

- Brilliant, vibrant team colors permanently fused directly into textiles
- Limitless customization, all-inclusive pricing with exclusive UA designs and customized prints
- 41 different colors and 18 prints available
- 6 piece minimum order

Diamond Select Jersey: 100% Polyester featuring a Diamond Knit front & Diamond Mesh back.

Diamond Jersey: 100% Polyester featuring Diamond Mesh front and 87% Polyester/13% Elastane Utility Mesh back.





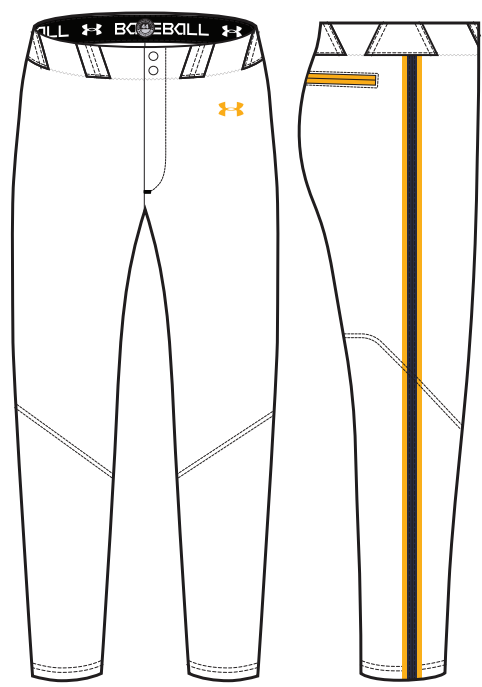
DIAMOND SELECT PANTS

NEW NAME, SAME GREAT PRODUCT
(Previously M ArmourFuse Baseball Pants)

SM-2XL, OVERSIZE 3XL, YXS-YXL

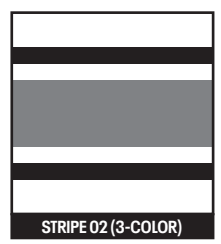
TAPERED	SIZE	FABRIC	PRICE
UJBPSTM (M)	SM-2XL	SUBLIMATED	\$149.50
UJBPSTY (Y)	YXS-YXL	SUBLIMATED	\$149.50
RELAXED	SIZE	FABRIC	PRICE
UJBPSRM (M)	SM-2XL	SUBLIMATED	\$149.50
UJBPSRY (Y)	YXS-YXL	SUBLIMATED	\$149.50
KNICKER	SIZE	FABRIC	PRICE
UJBPSKM (M)	SM-2XL	SUBLIMATED	\$149.50
UJBPSKY (Y)	YXS-YXL	SUBLIMATED	\$149.50

- 100% Polyester-Sublimated
- Relaxed Pant inseam= 32"
Tapered Pant inseam = 30"
Knickers inseam = 18"
- Available in Pinstripes/Solid
- Can be paired with Showtime or Gametime Jerseys
- +2" or -2" inseam (no charge), or +4" (+\$15; Relaxed/Tapered only)
- Reinforced 2-Ply Rear Slide Zone in the hamstrings for added durability
- Upgraded Elastic Waistband

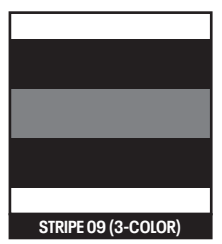


CAMDEN 3 STRIPE
NEW DESIGN FIRST SHIP: 10/26/2024

IF YOU HAVE QUESTIONS ON SLEEVE STRIPE PAIRINGS
PLEASE ASK A QUALIFIED SALES PROFESSIONAL

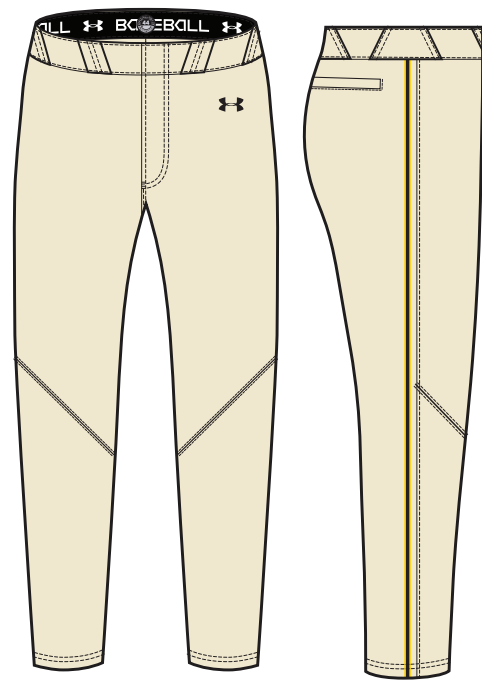


UA RECOMMENDS STRIPE 02 TO MATCH SHEA 5 JERSEY DESIGNS



UA RECOMMENDS STRIPE 09 TO MATCH SHEA 3 JERSEY DESIGNS

ALL CATALOG STRIPES (01-09) ARE 2" WIDE AND AVAILABLE FOR SOLID AND PINSTRIPE PANTS (SEE PAGE XX)
TURNER STRIPE .5" WIDE AVAILABLE FOR SOLID AND PINSTRIPE PANTS



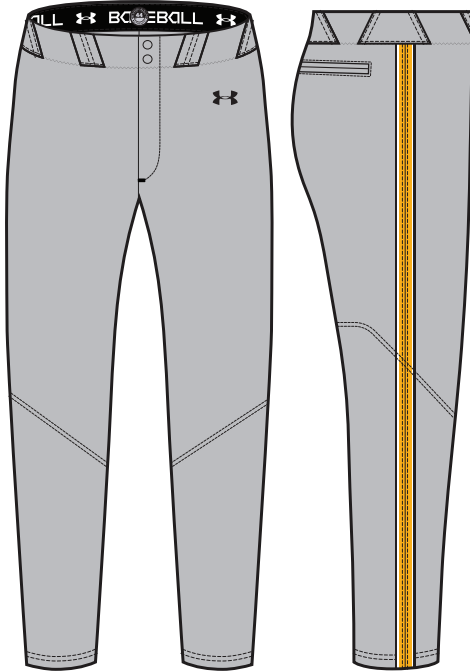
TURNER

OVERSIZED SURCHARGE +\$5 PER SIZE // EXTENDED/SHORTENED LENGTHS OFFERED, SEE PAGE 64 FOR MORE INFO

ARMOURFUSE

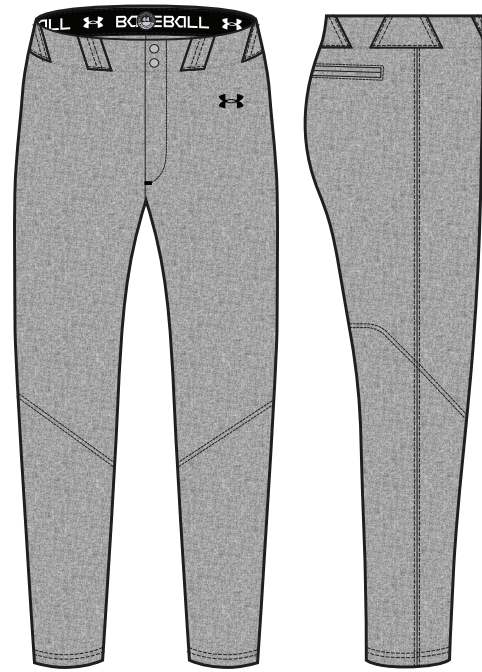


ARMOURFUSE® BASEBALL



CAMDEN 5 STRIPE

NEW DESIGN FIRST SHIP: 10/26/2024



FLANNEL

NEW DESIGN FIRST SHIP: 10/26/2024



SOLID

PINSTRIPLE

OVERSIZED SURCHARGE +\$5 PER SIZE // EXTENDED/SHORTENED LENGTHS OFFERED, SEE PAGE 64 FOR MORE INFO



ARMOURFUSE® UNIFORMS // ORDERING INFORMATION AND CUSTOMER SERVICE: 1-888-871-0990 // www.underarmourteamuniforms.com

FILL-IN LIFECYCLE TIMING FOUND ON PAGE 66. DECORATION OPTIONS AND ORDERING INFORMATION ARE AVAILABLE ON PAGES 60-66.

UNDER ARMOUR® TEAM SPRING 25 UATEAMCATALOGS.COM



THE VALLEY



STITCHED

AF DIAMOND SELECT FAUX PLACKET JERSEY

NEW NAME, SAME GREAT PRODUCT
(Previously M AF Showtime Faux Placket Jersey)

SM-2XL, OVERSIZE 3XL

STYLE	SIZE	PACKAGE*	PRICE
UBJX2M (M)	SM-2XL	SUBLIMATED	\$122.00
		1-COLOR TWILL	\$171.00
		2-COLOR TWILL	\$181.00

- 100% Polyester - Diamond Knit Front + Diamond Mesh Back
- Faux Placket front closure with functional top two buttons

*PACKAGE INCLUDES TEAM NAME + FRONT & BACK NUMBERS
ADDITIONAL TWILL OPTIONS FOUND ON PAGE 62



WINDMILL



COMISKY



TURNER W/ PINS



CAMDEN W/ PINS



SHEA W/ PINS

OVERSIZED SURCHARGE +\$5 PER SIZE // EXTENDED/SHORTENED LENGTHS OFFERED, SEE PAGE 64 FOR MORE INFO



ARMOURFUSE



ARMOURFUSE® BASEBALL



TURNER

SHOWN WITH AF BASELAYER,
SEE PG 17

CAMDEN

SHOWN WITH AF BASELAYER,
SEE PG 17

SHEA

SHOWN WITH AF BASELAYER,
SEE PG 17

OVERSIZED SURCHARGE +\$5 PER SIZE // EXTENDED/SHORTENED LENGTHS OFFERED, SEE PAGE 64 FOR MORE INFO



ARMOURFUSE® UNIFORMS // ORDERING INFORMATION AND CUSTOMER SERVICE: 1-888-871-0990 // www.underarmourteamuniforms.com

FILL-IN LIFECYCLE TIMING FOUND ON PAGE 66. DECORATION OPTIONS AND ORDERING INFORMATION ARE AVAILABLE ON PAGES 60-66.

UNDER ARMOUR® TEAM SPRING 25 UATEAMCATALOGS.COM



AF DIAMOND SELECT V-NECK JERSEY

NEW NAME, SAME GREAT PRODUCT
(Previously M AF Showtime V-Neck Jersey)

SM-2XL, OVERSIZE 3XL

STYLE	SIZE	PACKAGE*	PRICE
UJBV3M (M)	SM-2XL	SUBLIMATED	\$106.50
		1-COLOR TWILL	\$155.50
		2-COLOR TWILL	\$165.50

- 100% Polyester - Diamond Knit Front
+ Diamond Mesh Back

*PACKAGE INCLUDES TEAM NAME + FRONT & BACK NUMBERS
ADDITIONAL TWILL OPTIONS FOUND ON PAGE 62



MOONSHOT



THE DOME

STRIPES AVAILABLE IN ANY
COLOR COMBINATION



FULTON



WINDMILL



COMISKY



MURPHY W/ PINS



CAMDEN W/ PINS



SHEA W/ PINS

OVERSIZED SURCHARGE +\$5 PER SIZE // EXTENDED/SHORTENED LENGTHS OFFERED, SEE PAGE 64 FOR MORE INFO





CAMDEN

SHOWN WITH AF BASELAYER,
SEE PG 17

SHEA

SHOWN WITH AF BASELAYER,
SEE PG 17

MURPHY

SHOWN WITH AF BASELAYER,
SEE PG 17

OVERSIZED SURCHARGE +\$5 PER SIZE // EXTENDED/SHORTENED LENGTHS OFFERED, SEE PAGE 64 FOR MORE INFO



ARMOURFUSE® UNIFORMS // ORDERING INFORMATION AND CUSTOMER SERVICE: 1-888-871-0990 // www.underarmourteamuniforms.com

FILL-IN LIFECYCLE TIMING FOUND ON PAGE 66. DECORATION OPTIONS AND ORDERING INFORMATION ARE AVAILABLE ON PAGES 60-66.



NEW

AF DIAMOND FULL BUTTON JERSEY

FIRST SHIP: 10/25/2024 // SM-2XL, OVERSIZE 3XL, YSM-YXL

STYLE	SIZE	PRICE
UJBJG1M (M)	SM-2XL	\$110.00
UJBJG1Y (Y)	YSM-YXL	\$105.00

- 100% Polyester - Dimond Mesh front and sleeves for durability
- 87% Polyester, 13% Elastane - Utility Mesh full back for stretch
- Functioning Full Button Placket
- M's L: 31.5" Front Body from High Point of Shoulder
- M's L: 24" Across Chest



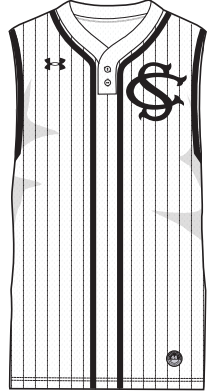
NEW

AF DIAMOND 2 BUTTON SLEEVELESS JERSEY

FIRST SHIP: 10/25/2024 // SM-2XL, OVERSIZE 3XL, YSM-YXL

STYLE	SIZE	PRICE
UJBJG3M (M)	SM-2XL	\$105.00
UJBJG3Y (Y)	YSM-YXL	\$100.00

- 100% Polyester - Dimond Mesh front and sleeves for durability
- 87% Polyester, 13% Elastane - Utility Mesh full back and collar for stretch
- Functioning Top 2 Button Placket
- M's L: 31" Front Body from High Point of Shoulder
- M's L: 24" Across Chest



NEW

AF DIAMOND V-NECK JERSEY

FIRST SHIP: 10/25/2024 // SM-2XL, OVERSIZE 3XL, YSM-YXL

STYLE	SIZE	PRICE
UJBJG2M (M)	SM-2XL	\$99.00
UJBJG2Y (Y)	YSM-YXL	\$94.00

- 100% Polyester - Dimond Mesh front and sleeves for durability
- 87% Polyester, 13% Elastane - Utility Mesh full back and collar for stretch
- Throwback Raglan sleeves for a vintage fit and feel
- M's L: 31.5" Front Body from High Point of Shoulder
- M's L: 24" Across Chest



PINSTRIPES

TURNER

TURNER PINS

OVERSIZED SURCHARGE +\$5 PER SIZE // CAN ADD +2" AND +4" BODY LENGTH, SEE PAGE 64 FOR MORE INFO





CAMDEN 3-STRIPE

CAMDEN 3-STRIPE PINS

CAMDEN 5-STRIPE

FLANNEL

OVERSIZED SURCHARGE +\$5 PER SIZE // CAN ADD +2" AND +4" BODY LENGTH, SEE PAGE 64 FOR MORE INFO



ARMOURFUSE® UNIFORMS // ORDERING INFORMATION AND CUSTOMER SERVICE: 1-888-871-0990 // www.underarmourteamuniforms.com

FILL-IN LIFECYCLE TIMING FOUND ON PAGE 66. DECORATION OPTIONS AND ORDERING INFORMATION ARE AVAILABLE ON PAGES 60-66.





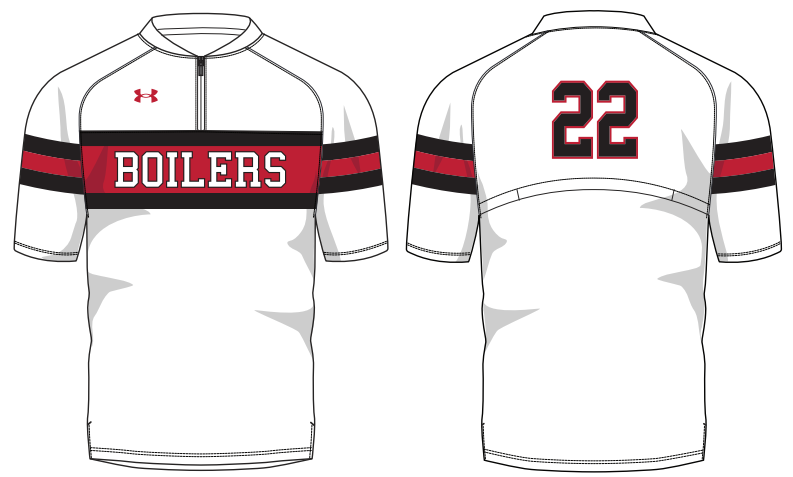
HENLEY

ARMOURFUSE CAGE JACKET

SM-2XL, OVERSIZE 3XL-4XL, YXS-YXL

STYLE	SIZE	PRICE
UJBTZ1M (M)	SM-2XL	\$150.00
UJBTZ1Y (Y)	YXS-YXL	\$135.00

- Sublimated stretch woven fabric
- 2-ply collar, vented back, side-vent at the hem to provide room for belted baseball pant
- Loose fit for shoulder mobility and to allow for wearing over a jersey
- Ability to add custom logo, team name, player name and player number



WINDMILL

OVERSIZED SURCHARGE +\$5 PER SIZE

AF ¾ SLEEVE FITTED CREW

SM-2XL, OVERSIZE 3XL

STYLE	SIZE	PRICE
UJGC3M (M)	SM-2XL	\$80.50

- Available in SHIFT, CANDLE STICK & SCOUT Designs



CANDLESTICK



SHIFT



SCOUT

OVERSIZED SURCHARGE +\$5 PER SIZE





BASEBALL STOCK

- Unique designs and advanced technology in stock
- Pre-set designs, ready to ship
- Best-in-class stock fabrications for all levels of play



PACKAGE DECORATION

	1COLOR	2COLOR
SCREENPRINT Team Name, Front/Back Numbers	\$17.50	\$27.50
TACKLE TWILL Team Name, Front/Back Numbers	\$49.00	\$59.00

Additional Stock Options on page 62-63.

ICON FAUX PLACKET JERSEY

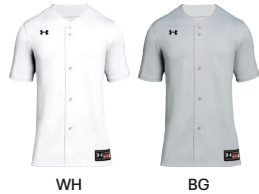
SM-2XL, OVERSIZE 3XL, YSM-YXL

STYLE	SIZE	PACKAGE	PRICE
UBJ114M (M)	SM-2XL	BLANK	\$53.00
		1-COLOR TWILL	\$102.00
		2-COLOR TWILL	\$112.00
UBJ114Y (Y)	YSM-YXL	BLANK	\$48.00

• 100% Polyester - Diamond Knit Front + Diamond Mesh Back

UA RECOMMENDS THAT THIS STYLE BE DECORATED WITH TACKLE TWILL ONLY

*PACKAGE INCLUDES TEAM NAME + FRONT & BACK NUMBERS
OVERSIZED SURCHARGE +\$5 PER SIZE



WH

BG

ICON BASEBALL PANT 2.0

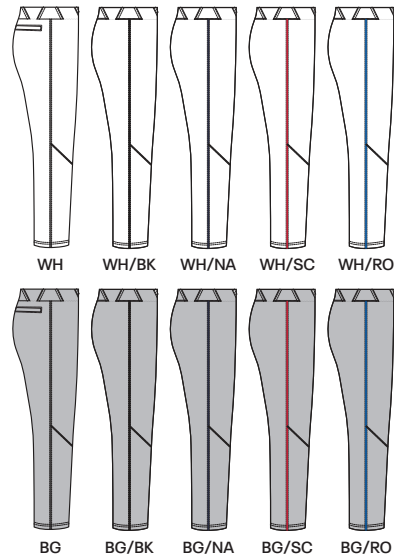
SM-2XL, OVERSIZE 3XL, YXS-YXL

TAPERED	SIZE	FABRIC	PRICE
UBP52TM (M)	SM-2XL	SOLID	\$72.50
UBP52TY (Y)	YXS-YXL	SOLID	\$67.00
RELAXED	SIZE	FABRIC	PRICE
UBP52RM (M)	SM-2XL	SOLID	\$72.50
UBP52XM (M)	SM-2XL	PIPED LSO*	\$77.50
UBP52RY (Y)	YXS-YXL	SOLID	\$67.00
UBP52XY (Y)	YXS-YXL	PIPED LSO*	\$72.50

- 100% Polyester
- Updated Modern fit, including new Tapered Fit option
- 2-ply reinforced knee

PIPED PRICING INCLUDES COLORS SHOWN ABOVE IN 3/16"
OVERSIZED SURCHARGE +\$5 PER SIZE

*LAST SEASON OFFERED



WH

WH/BK

WH/NA

WH/SC

WH/RO

BG

BG/BK

BG/NA

BG/SC

BG/RO



IGNITE 2-BUTTON JERSEY

SM-2XL, OVERSIZE 3XL, YSM-YXL

STYLE	SIZE	PACKAGE	PRICE
UBJ113M (M)	SM-2XL	BLANK	\$48.00
		1-COLOR SCREEN	\$65.50
		2-COLOR SCREEN	\$75.50
		1-COLOR TWILL	\$97.00
UBJ113Y (Y)	YSM-YXL	2-COLOR TWILL	\$107.00
		BLANK	\$43.00

•100% Polyester - Base Mesh

*PACKAGE INCLUDES TEAM NAME + FRONT & BACK NUMBERS
OVERSIZED SURCHARGE +\$5 PER SIZE



ICON KNICKER PANT

SM-2XL, OVERSIZE 3XL

STYLE	SIZE	PACKAGE	PRICE
UBP54KM (M)	SM-2XL	BLANK	\$53.00

- 100% Polyester - Diamond Knit
- Adult inseam = 18"
- 2-ply reinforced knees

AFTER-BRAID +\$17. SEE PAGE 63 FOR DETAILS
OVERSIZED SURCHARGE +\$5 PER SIZE



IGNITE V-NECK JERSEY

SM-2XL, OVERSIZE 3XL, YSM-YXL

STYLE	SIZE	PACKAGE	PRICE
UBJ112M (M)	SM-2XL	BLANK	\$38.00
		1-COLOR SCREEN	\$55.50
		2-COLOR SCREEN	\$65.50
		1-COLOR TWILL	\$87.00
UBJ112Y (Y)	YSM-YXL	2-COLOR TWILL	\$97.00
		BLANK	\$33.00

•100% Polyester - Base Mesh

*PACKAGE INCLUDES TEAM NAME + FRONT & BACK NUMBERS
OVERSIZED SURCHARGE +\$5 PER SIZE

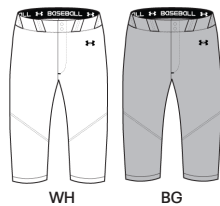


NEW YOUTH ICON PANT 2.0

YXS-YXL

STYLE	SIZE	PACKAGE	PRICE
UBPSTPY (Y)	YSM-YXL	BLANK	\$49.50

MEASUREMENT	YXS	YSM	YMD	YLG	YXL
INSEAM	12.75"	13.5"	15"	17.25"	17.625"



NEW

1367347

UA UTILITY PRO PIPED

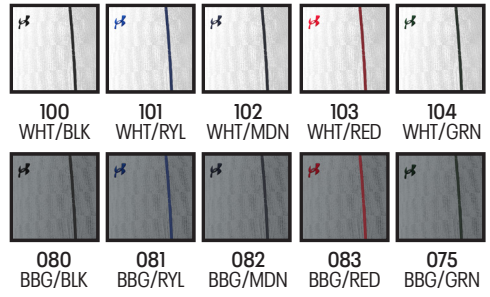
\$45.00 | **FITTED** | SM-2XL

FIRST SHIP: 6/20/2024

- Lightweight, durable, performance fabric built for gameday comfort
- Material wicks sweat & dries really fast
- Wider waistband with belt loops, working fly & interior silicone print to help keep your jersey in place
- Open back pockets
- Inseam: 30"

100% POLYESTER

heatgear



1374374 UA UTILITY BASEBALL PANTS

\$30.00 | **FITTED** | SM-3XL (3XL: 15% UPCHARGE)

YOUTH: 1374381 | \$25.00 | YXS-YXL

FIRST SHIP: C/O // LAST SHIP: 6/19/2025

- Not all baseball pants are made the same. These are light enough for hot weather, but still give you the durability, stretch, and protection for a full season.
- Lightweight, durable, performance fabric built for gameday comfort
- Material wicks sweat & dries really fast
- Seven belt loops, working fly & double front enclosure
- Dual-layer knees deliver added durability
- Super-comfortable waistband stretches so you can move through your swing

100% POLYESTER

heatgear

YOUTH OFFERED IN ALL COLORS



001 BLK/WHT 100 WHT/BLK 080 BBG/BLK



1375654 UA UTILITY BASEBALL KNICKER

\$30.00 | **FITTED** | SM-2XL

YOUTH: 1375659 | \$25.00 | YXS-YXL

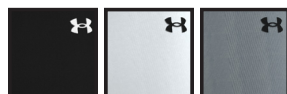
FIRST SHIP: C/O // LAST SHIP: 6/19/2025

- Not all baseball pants are made the same. These are light enough for hot weather, but still give you the durability, stretch, and protection for a full season.
- Lightweight, durable, performance fabric built for gameday comfort
- Material wicks sweat & dries really fast
- Seven belt loops, working fly & double front enclosure
- Dual-layer knees deliver added durability
- Super-comfortable waistband stretches so you can move through your swing

100% POLYESTER

heatgear

YOUTH OFFERED IN ALL COLORS



001 BLK/WHT 100 WHT/BLK 075 BBG/BLK



1367346
UTILITY SLIDING SHORTS 21

\$35.00 | **COMPRESSION** | SM-3XL (3XL: 15% UPCHARGE)

YOUTH: 1367356 | \$30.00 | YSM-YXL

FIRST SHIP: C/O

- Universal cup pocket
- 4-way stretch Heatgear fabric
- Mesh inserts for breathability
- Padded seat for extra protection

100% POLYESTER

heatgear

YOUTH OFFERED IN ALL COLORS



100
WHT

1367355
BOY'S UTILITY PRO SLIDER
W/ CUP

\$35.00 | **COMPRESSION** | YSM-YXL

FIRST SHIP: C/O

- Super-light & breathable HeatGear® fabric delivers superior coverage without weighing you down
- Material wicks sweat & dries really fast
- 4-way stretch material moves better in every direction
- Stretch-mesh gusset & panels deliver strategic ventilation
- Exposed elastic performance waistband
- Cup pocket
- Cup included
- Inseam: 6.5"

BODY: 84% POLYESTER/16% ELASTANE
 MESH: 92% POLYESTER/8% ELASTANE

heatgear



100
WHT

1252084
UA M'S BASEBALL BELT

\$12.99 | OSFA, LENGTH 44" ADJUSTABLE

YOUTH: 1252085 | \$12.99
OSFA, LENGTH 41" ADJUSTABLE

FIRST SHIP: C/O

- Elastic webbing with polyurethane
- Custom UA branded belt loop

70% ELASTIC, 30% PU



001
BLK

100
WHT

410
MDN

600
RED

400
RYL

301
GRN

609
MAR

500
PUR

860
DKO

750
SGD

475
CBL

019
CNC
(YOUTH ONLY)

654
TPK
(YOUTH ONLY)

NEW

1386952

UA M'S UTILITY PRO CAGE JACKET

\$70.00 | **LOOSE** | SM-3XL (3XL: 15% UPCHARGE)

FIRST SHIP: 6/20/2024

- UA Storm technology repels water without sacrificing breathability
- Durable, stretch-woven fabric is ultra-lightweight & lets you move
- 4-way stretch material moves better in every direction
- Back vent, underarm mesh panels & side-vent bottom hem for added breathability
- Zero-distraction hood design with no drawstring gives you full peripheral vision
- Rip stitch convertible sleeves so you can cut at the elbow seam for a short sleeve
- Open hand pockets
- Shaped hem

87% POLYESTER, 13% ELASTANE

heatgear **STORM**



1367366

UA M'S YARD BASEBALL SHORT

\$40.00 | **LOOSE** | SM-3XL (3XL: 15% UPCHARGE)

FIRST SHIP: C/O

- UA Storm technology repels water without sacrificing breathability
- Ultra-lightweight, stretchy woven fabric delivers superior mobility
- Material wicks sweat & dries really fast
- Encased elastic waistband with external drawcord
- Open hand pockets
- Side notched hem

100% POLYESTER

heatgear **STORM**



1386253
UA TEAM OVER-THE-CALF UNISEX

\$14.00 | SINGLE PAIR

SM (YOUTH 13.5K-4.5 / WOMEN'S 4-6),
MD (YOUTH 4.5-7 / MEN'S 7-8.5 / WOMEN'S 6-10),
LG (MEN'S 8.5-13 / WOMEN'S 10-14), **XL** (MEN'S 13-16)

YOUTH: 1386254 | \$12.00

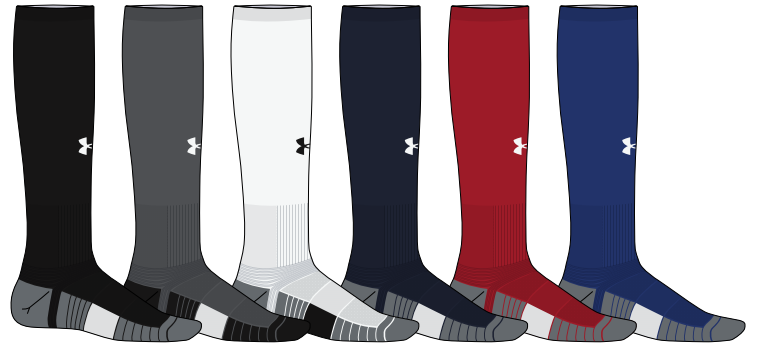
XS (10.5K-13K), **SM** (YOUTH 13.5K-4.5)
MD (YOUTH 4.5-7)

FIRST SHIP: 12/20/2024

- Medium cushioning throughout foot for comfort & protection
- Mesh panels on top of foot for added breathability
- Durable material wicks sweat & dries really fast
- Anti-odor technology helps prevent odor in the sock
- Embedded arch support helps reduce foot fatigue
- Fitted heel contours around your foot for a better fit
- Left/Right specific fit

96% POLYESTER, 4% ELASTANE

YOUTH OFFERED IN ALL COLORS



001 BLK/PITCH/WHT | 040 GPH/PITCH/WHT | 100 WHT/PITCH/BLK | 410 MDN/PITCH/WHT | 600 RED/PITCH/WHT | 400 RYL/PITCH/WHT



301 GRN/PITCH/WHT | 609 MAR/PITCH/WHT | 500 PUR/PITCH/WHT | 465 HOR BLUE/PITCH/WHT | 750 SGD/PITCH/WHT | 800 TOG/PITCH/WHT



860 DKO/PITCH/WHT | 625 CRD/PITCH/WHT | 305 TKG/PITCH/WHT | 230 GRIDIRON/PITCH/WHT | 654 TPK/PITCH/WHT | 722 CTL/PITCH/WHT

NEW

3027444

UA HARPER 9 PRO TPU

\$110.00 | SIZES: 6.5-13, 14, 15, 16

FIRST SHIP: 7/20/2024

- UA Intelliknit upper provides breathability & premium stretch & compression
- Engineered fit that increases comfort & reduces flex pressure
- Booty construction gives athlete locked in support
- Synthetic leather in forefoot gives athlete increased durability for the grind of a full season
- UA HOVR provides maximum power, stability & energy return in your swing
- Dual-density TPU outsole features 10 TPU spikes & smaller TPU nubs for superior traction on turf or dirt



001 BLK/WHT/MGD 100 WHT/WHT/MGD 101 WHT/RYL/MGD



102 WHT/MDN/MGD 104 WHT/RED/MGD

NEW

3027443

UA HARPER 9 TURF

\$110.00 | SIZES: 6.5-13, 14, 15, 16

FIRST SHIP: 7/20/2024

- UA Intelliknit upper provides breathability & premium stretch & compression
- Engineered fit that increases comfort & reduces flex pressure
- Booty construction gives athlete locked in support
- Charged cushioning provides premium underfoot comfort for the grind of a full season
- Game ready outsole with multi length nubs for premium traction on the field



001 BLK/WHT/MGD 100 BBG/BBG/MGD 101 WHT/SUMMIT WHT/MGD

NEW

3027453

UA HARPER 9 TPU JR

\$65.00 | SIZES: 10K-13K, 1-6

FIRST SHIP: 7/20/2024

- Synthetic upper is light, breathable & super-durable
- Strategic design for increased ease of entry
- Full-length EVA midsole for underfoot cushioning & comfort
- Lightweight, molded TPU cleat provides premium comfort & superior traction on turf & dirt



001 BLK/WHT/MGD 100 WHT/WHT/MGD

3025592 UA YARD LOW MT

\$100.00 | SIZES: 6.5-14, 15, 16

FIRST SHIP: C/O

- Elevated plush pocket in heel for added comfort and locked in feel
- TPU Cage increases stability for lateral movements
- Charged Cushioning midsole converts impact into explosive speed & power on the diamond
- Engineered textile in vamp creates sneaker like comfort, breathability, and flexibility
- UA Microtips technology provides comfort, more traction & less weight underfoot
- 10 strategically placed cleats on perimeter for more points of ground contact to reduce cleat pressure
- Medial, Lateral and toe-box perf holes for increased breathability
- Durable toe cap overlay for maximum protection
- Lightweight molded ortholite sockliner maintains compression set for long-lasting comfort & traction



3027447 UA LEADOFF LOW RM 3.0

\$40.00 | SIZES: 6.5-13, 14, 15

YOUTH: 3027455 | \$30.00 | 8-13K, 1-6

FIRST SHIP: C/O

- Synthetic upper is lightweight and durable
- Padded collar & heel construction for ultimate step-in comfort
- Full length EVA midsole for added comfort, cushioning that evenly distributes cleat pressure underfoot
- Rubber molded cleats provide optimal traction & durability on all field surfaces

Y = YOUTH OFFERING



NEW

1385423

UA HARPER PRO GLOVES 24

\$55.00 | COMES IN PAIRS | SM-2XL

FIRST SHIP: 12/20/2024 // LAST SHIP: 6/19/2025

- Perforated sheepskin leather for durability & breathability on back of hand
- Extended palm wrapover construction to increase grip on the bat handle
- Sheepskin leather with dragon skin print on the palm to maximize comfort, durability & bat feel
- Double knit emboss on back of hand for added texture & durability
- Integrated cuff with patent-pending full wrap closure for superior wrist support & lockdown adjustability

53% SHEEP LEATHER, 23% NYLON,
12% POLYESTER, 9% RUBBER, 3% ELASTANE



1378764

UA CLEAN UP

\$30.00 | COMES IN PAIRS | SM-2XL

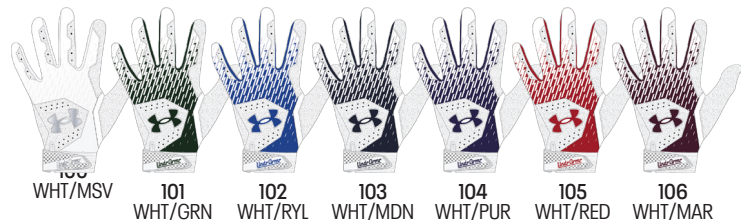
YOUTH: 1378766 | \$25.00 | YSM-YLG

FIRST SHIP: C/O

- Synthetic palm provides durability & grip
- Built with HeatGear® fabric to keep your hands cool, dry & light all game
- Synthetic overlays add support in all the right places
- Perforations built over the fingers for extra breathability
- Adjustable elastic wrist cuffs provide support & a locked-in, powerful feel

87% NYLON, 13% ELASTANE

Y = YOUTH OFFERING



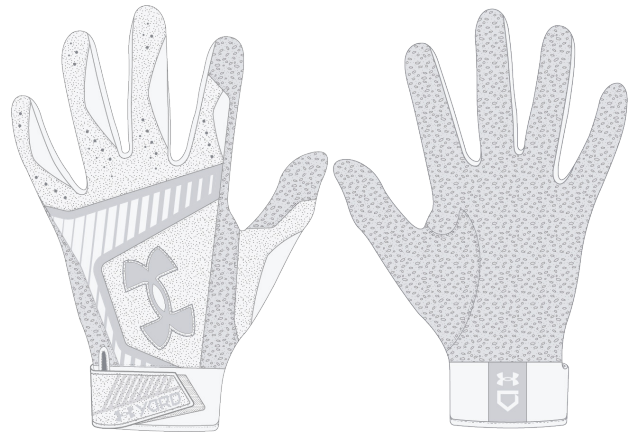
1378759 UA YARD 9

\$50.00 | COMES IN PAIRS | SM-2XL

FIRST SHIP: C/O

- Premium embossed leather palm for ultimate feel
- Lightweight, stretchy HeatGear® fabric on back of hand with leather overlays for added support
- Perforations on fingers for strategic ventilation
- Stretchy neoprene wrist with adjustable leather strap provides extended wrist support

BACK OF HAND: 87% NYLON, 13% ELASTANE
PALM & OVERLAYS: 100% LEATHER



1378758 UA YARD 9 STARS & STRIPES

\$55.00 | COMES IN PAIRS | SM-2XL

FIRST SHIP: C/O

- Premium embossed leather palm for ultimate feel
- Lightweight, stretchy HeatGear® fabric on back of hand with leather overlays for added support
- Perforations on fingers for strategic ventilation
- Stretchy neoprene wrist with adjustable leather strap provides extended wrist support

BACK OF HAND: 87% NYLON, 13% ELASTANE
PALM & OVERLAYS: 100% LEATHER



100
WHT/RED/MGD

NEW

1384464

UA YARD BACKPACK 2.0

\$90.00

FIRST SHIP: 12/20/2024

- UA Storm technology delivers an element-battling, highly water-resistant finish
- Large main compartment opening with mesh zipper & slip pockets
- Front zip pocket for essential item storage
- Built-in fence hook for on field organization
- Shoe compartment on front fits up to size 14 pair of cleats
- Adjustable, removable UA Strap Clip™ on shoulder to prevent duffel bag from falling off when carrying both
- Bat slip pocket for secure storage on both sides of the bag
- Water bottle pocket with elastic gusset to fit up to a 32oz bottle
- Top grab handle & sternum clip
- D-ring attachment point so you can clip anything with a carabiner on for easy transport

STORM



001 BLK/MSV 035 STL/MSV 410 MDN/MSV 600 RED/RYL/MGD

1369318

UA UTILITY PRINT BATPACK

\$65.00

FIRST SHIP: C/O

- UA Storm technology delivers an element-battling, highly water-resistant finish
- Foam padded back panel for enhanced comfort & breathability
- Soft tricot-lined front valuables pocket & a hook & loop section for batting glove storage
- Built-in fence hook for on field organization
- Airvent shoe compartment on front is embroidery compatible for customization
- Second bag strap clip for multiple ways to carry
- Large capacity holds 4 bats, cleats, batting gloves, valuables, gloves & water bottle

STORM



002 BLK/MGD 003 BLK/WHT

036 STL/MGD 602 RED/WHT

403 RYL/WHT 411 MDN/MGD

1365313 UA ACE2 T-BALL BATPACK

\$40.00

FIRST SHIP: C/O

- UA Storm technology delivers an element-battling, highly water-resistant finish
- Foam padded back panel for enhanced comfort & breathability
- Soft tricot-lined front valuables pocket & a hook & loop section for batting glove storage
- Built-in fence hook for on field organization
- Airvent shoe compartment on front is embroidery compatible for customization
- Small capacity holds 2 bats, cleats, batting gloves, valuables, gloves & water bottle
- Ideal size for ages 4-7
- Top grab handle

STORM



006
BLK/MGD

412
MDN/MGD

603
RED/HVY

404
RYL/HVY

004
BLK/TPK

1365312 UA BASEBALL WHEELED BAG

\$150.00

FIRST SHIP: C/O

- UA Storm technology delivers an element-battling, highly water-resistant finish
- Multiple options on the go including shoulder straps, grab handles, wheels
- Big enough for even catcher's gear, with separate compartments for your helmet and cleats
- Side panel is completely removable for team or player embellishment
- Separate storage for up to 6 bats

STORM



003
BLK/WHT

UA700 STRETCH FIT AIRVENT™ PERFORMANCE CAP

FIRST SHIP: C/O

NO SET UP OR TAPE CHARGE | 18 PC MINIMUM

- Breathable Perforation
- Moisture Absorbing & Quick Drying
- Pro or Low Pro Shape
- Flat or Precurved Bill
- Traditional or X-Peak

UA AIRVENT™

4-6 WEEKS FROM ART APPROVAL

ALSO AVAILABLE IN FITTED STYLE: UA704

ALSO AVAILABLE IN STOCK STYLE: UAB404



STRETCH FIT CONVERSION CHART

XS	6 1/2" - 6 3/4"	20 1/2" - 21 1/2"
S	6 7/8" - 7 1/8"	21 3/4" - 22 3/8"
M	7 1/8" - 7 3/8"	22 3/8" - 23 1/4"
L	7 3/8" - 7 5/8"	23 1/4" - 24"
XL	7 5/8" - 8"	24" - 25 1/4"



UA654 RESISTOR PERFORMANCE PERFORATED CAP

FIRST SHIP: C/O

NO SET UP OR TAPE CHARGE | 18 PC MINIMUM

- Perforated Back Panels
- Lightweight, Super Comfortable
- Moisture Absorbing & Quick Drying
- Pro or Low Pro Shape
- Flat or Precurved Bill
- Traditional or X-Peak

RESISTOR PERFORMANCE FABRIC

•4-6 WEEKS FROM ART APPROVAL

•ALSO AVAILABLE IN STRETCH FIT STYLE: UA650

•ALSO AVAILABLE IN STOCK STYLE: UAB401



FITTED FIT CONVERSION CHART

6 5/8" - 20 3/4"	6 3/4" - 21 1/2"	6 7/8" - 21 3/4"	7" - 22"
7 1/8" - 22 3/8"	7 1/4" - 22 3/4"	7 3/8" - 23 1/4"	7 1/2" - 22 5/8"
7 5/8" - 24"	7 3/4" - 24 3/8"	8" - 25 1/4"	



TEAM HEADWEAR

UA600 RESISTOR PERFORMANCE CAP

FIRST SHIP: C/O

NO SET UP OR TAPE CHARGE | 18 PC MINIMUM

- Water Repellent
- Lightweight, Super Comfortable
- Moisture Absorbing & Quick Drying
- Pro or Low Pro Shape
- Flat or Precurved Bill
- Traditional or X-Peak

RESISTOR PERFORMANCE FABRIC

- 4-6 WEEKS FROM ART APPROVAL
- ALSO AVAILABLE IN FITTED STYLE: UA604
- ALSO AVAILABLE IN STOCK STYLE: UAB400

STRETCH FIT CONVERSION CHART

XS	6 1/2" - 6 3/4"	20 1/2" - 21 1/2"
S	6 7/8" - 7 1/8"	21 3/4" - 22 3/8"
M	7 1/8" - 7 3/8"	22 3/8" - 23 1/4"
L	7 3/8" - 7 5/8"	23 1/4" - 24"
XL	7 5/8" - 8"	24" - 25 1/4"



UA504 WOOL PERFORMANCE CAP

FIRST SHIP: C/O

NO SET UP OR TAPE CHARGE | 18 PC MINIMUM

- Wool with Modern Performance Properties
- Lightweight & Moisture Wicking
- Pro or Low Pro Shape
- Flat or Precurved Bill
- Traditional or X-Peak

WOOL PERFORMANCE FABRIC

- 4-6 WEEKS FROM ART APPROVAL
- ALSO AVAILABLE IN STRETCH FIT STYLE: UA500

FITTED FIT CONVERSION CHART

6 5/8" - 20 3/4"	6 3/4" - 21 1/2"	6 7/8" - 21 3/4"	7" - 22"
7 1/8" - 22 3/8"	7 1/4" - 22 3/4"	7 3/8" - 23 1/4"	7 1/2" - 22 5/8"
7 5/8" - 24"	7 3/4" - 24 3/8"	8" - 25 1/4"	



**UA908
OSFM AIRVENT™ PERFORMANCE CAP**

FIRST SHIP: C/O

NO SET UP OR TAPE CHARGE | 18 PC MINIMUM

- UA AirVent™ Performance Fabric
- Breathable Perforation
- Moisture Absorbing and Quick Drying
- UA Performance Sweatband
- Traditional or X-Peak

UA AIRVENT™

4-6 WEEKS FROM ART APPROVAL
ALSO AVAILABLE IN STOCK STYLE: UAB421

ONE SIZE FITS MOST



**UA815
OSFM AIRVENT™ PERFORMANCE VISOR**

FIRST SHIP: C/O

NO SET UP OR TAPE CHARGE | 18 PC MINIMUM

- UA AirVent™ Performance Fabric
- Breathable Perforation
- Moisture Absorbing and Quick Drying
- UA Performance Sweatband
- Traditional or X-Peak

UA AIRVENT™

4-6 WEEKS FROM ART APPROVAL

ONE SIZE FITS MOST



TEAM HEADWEAR

UAB421 OSFM AIRVENT™ PERFORMANCE CAP

\$23.00

FIRST SHIP: C/O

NO SET UP OR TAPE CHARGE | 12 PC MINIMUM

- Breathable Perforation
- Moisture Absorbing & Quick Drying
- Unstructured Shape
- Precurved Bill
- Slide Buckle Closure

UA AIRVENT™

2 WEEKS FROM ART APPROVAL (BLANKS SHIP IN 24-48 HOURS)

ONE SIZE FITS MOST



UAB420 GARMENT WASHED TWILL CAP

\$20.00

FIRST SHIP: C/O

NO SET UP OR TAPE CHARGE | 12 PC MINIMUM

- Unstructured Shape
- Precurved Bill
- Slide Buckle Closure

GARMENT WASHED TWILL

2 WEEKS FROM ART APPROVAL (BLANKS SHIP IN 24-48 HOURS)

ONE SIZE FITS MOST



UAB400 RESISTOR PERFORMANCE CAP

\$26.00

FIRST SHIP: C/O

NO SET UP OR TAPE CHARGE | 12 PC MINIMUM

- Water Repellent
- Lightweight, Super Comfortable
- Moisture Absorbing & Quick Drying
- Pro Shape
- Flat Bill

RESISTOR PERFORMANCE FABRIC

2 WEEKS FROM ART APPROVAL (BLANKS SHIP IN 24-48 HOURS)

STRETCH FIT CONVERSION CHART

XS	6 1/2" - 6 3/4"	20 1/2" - 21 1/2"
S	6 7/8" - 7 1/8"	21 3/4" - 22 3/8"
M	7 1/8" - 7 3/8"	22 3/8" - 23 1/4"
L	7 3/8" - 7 5/8"	23 1/4" - 24"
XL	7 5/8" - 8"	24" - 25 1/4"



UAB401 RESISTOR PERFORMANCE PERFORATED CAP

\$29.00

FIRST SHIP: C/O

NO SET UP OR TAPE CHARGE | 12 PC MINIMUM

- Perforated Back Panels
- Lightweight, Super Comfortable
- Moisture Absorbing & Quick Drying
- Pro Shape
- Flat Bill

RESISTOR PERFORMANCE FABRIC

2 WEEKS FROM ART APPROVAL (BLANKS SHIP IN 24-48 HOURS)

STRETCH FIT CONVERSION CHART

XS	6 1/2" - 6 3/4"	20 1/2" - 21 1/2"
S	6 7/8" - 7 1/8"	21 3/4" - 22 3/8"
M	7 1/8" - 7 3/8"	22 3/8" - 23 1/4"
L	7 3/8" - 7 5/8"	23 1/4" - 24"
XL	7 5/8" - 8"	24" - 25 1/4"



UAB403

ARMOUR CHOICE PERFORMANCE MESHBACK CAP

\$25.00

FIRST SHIP: C/O

NO SET UP OR TAPE CHARGE | 12 PC MINIMUM

- Birdseye Polyester, Bamboo & Charcoal Blend
- Bacteria & Odor Resistant
- Lightweight, Moisture Absorbing & Quick Drying
- Pro Shape
- Flat Bill

ARMOUR CHOICE FABRIC

2 WEEKS FROM ART APPROVAL (BLANKS SHIP IN 24-48 HOURS)

STRETCH FIT CONVERSION CHART

XS	6 1/2" - 6 3/4"	20 1/2" - 21 1/2"
S	6 7/8" - 7 1/8"	21 3/4" - 22 3/8"
M	7 1/8" - 7 3/8"	22 3/8" - 23 1/4"
L	7 3/8" - 7 5/8"	23 1/4" - 24"
XL	7 5/8" - 8"	24" - 25 1/4"



UAB404

AIRVENT™ PERFORMANCE CAP

\$25.00

FIRST SHIP: C/O

NO SET UP OR TAPE CHARGE | 12 PC MINIMUM

- Breathable Perforation
- Moisture Absorbing & Quick Drying
- UA Performance Sweatband
- Pro Shape
- Flat Bill

UA AIRVENT™

2 WEEKS FROM ART APPROVAL (BLANKS SHIP IN 24-48 HOURS)

STRETCH FIT CONVERSION CHART

XS	6 1/2" - 6 3/4"	20 1/2" - 21 1/2"
S	6 7/8" - 7 1/8"	21 3/4" - 22 3/8"
M	7 1/8" - 7 3/8"	22 3/8" - 23 1/4"
L	7 3/8" - 7 5/8"	23 1/4" - 24"
XL	7 5/8" - 8"	24" - 25 1/4"



UAB422 OSFM TRUCKER MESH

\$18.00

FIRST SHIP: C/O

NO SET UP OR TAPE CHARGE | 12 PC MINIMUM

- Comfort Twill Front
- Trucker Mesh Back
- Mid Crown Shape
- Slight Curved Bill

COTTON TWILL

2 WEEKS FROM ART APPROVAL (BLANKS SHIP IN 24-48 HOURS)

ONE SIZE FITS MOST



UAB402 STRETCH FIT ARMOUR CHOICE CAP

\$25.00

FIRST SHIP: C/O

NO SET UP OR TAPE CHARGE | 12 PC MINIMUM

- Birdseye Polyester, Bamboo & Charcoal Blend
- Lightweight, Moisture Absorbing & Quick Drying
- Bacteria Resistant and Odor Resistant
- UA Performance Sweatband
- Precurved Bill

ARMOUR CHOICE FABRIC

2 WEEKS FROM ART APPROVAL (BLANKS SHIP IN 24-48 HOURS)

STRETCH FIT CONVERSION CHART

XS	6 1/2" - 6 3/4"	20 1/2" - 21 1/2"
S	6 7/8" - 7 1/8"	21 3/4" - 22 3/8"
M	7 1/8" - 7 3/8"	22 3/8" - 23 1/4"
L	7 3/8" - 7 5/8"	23 1/4" - 24"
XL	7 5/8" - 8"	24" - 25 1/4"



TEAM HEADWEAR

UAB440 AIRVENT™ PERFORMANCE VISOR

\$23.00

FIRST SHIP: C/O, *NEW COLORS: 9/1/2024

NO SET UP OR TAPE CHARGE | 12 PC MINIMUM

- Breathable Perforation
- Moisture Absorbing & Quick Drying
- Velcro Closure

UA AIRVENT™

2 WEEKS FROM ART APPROVAL (BLANKS SHIP IN 24-48 HOURS)

ONE SIZE FITS MOST



UAB450 OSFM AIRVENT™ PERFORMANCE BOONIE

\$40.00

FIRST SHIP: C/O

NO SET UP OR TAPE CHARGE | 12 PC MINIMUM

- UA AirVent™ Performance Fabric
- Breathable Perforation
- Moisture Absorbing and Quick Drying
- UA Performance Sweatband
- Self-Fabric Drawstring & Plastic Pull-Tab

UA AIRVENT™

2 WEEKS FROM ART APPROVAL (BLANKS SHIP IN 24-48 HOURS)

ONE SIZE FITS MOST



TEAM HEADWEAR

1376702 UA TEAM BLITZING

\$28.00 | S/M, M/L, L/XL, XL/XXL

FIRST SHIP: C/O

- UA Classic Fit: pre-curved visor & structured front panels that maintains shape with a low profile fit
- Breathable, textured knit fabric is super-soft for all day comfort
- Built-in, stretchy elastic sweatband wicks away sweat to keep you cool & dry
- Stretch construction provides a comfortable fit
- One embroidered side logo

100% POLYESTER



001
BLK/WHT



100
WHT/BLK



040
GPH/BLK



410
MDN/WHT

1369785 UA TEAM BLANK CHINO ADJ

\$20.00 | OSFM

FIRST SHIP: C/O

- Unstructured curved visor adjustable cap
- Performance chino fabrication
- Jacquard Twill UA Logo Patch on wearers back left side

65% POLYESTER, 35% COTTON



001
BLK/WHT



100
WHT/BLK



012
PITCH GRY/BLK



410
MDN/PITCH GRY



600
RED/BLK



400
RYL/BLK

NEW**YARD DUAL**

FIRST SHIP:C/O

- SPECIFIC SKU: UA Polarized lenses eliminate glare for clearer vision & reduced eye fatigue without color distortion
- SPECIFIC SKU: UA Tuned™ Baseball lenses provide contrast enhancement to spot & track the ball more precisely
- Fully-adjustable UA ArmourGrip nose pads have a lasered engraving for ultimate comfort & stability
- Meets ANSI Z87.1 industrial standards for high-mass & high-velocity impact protection
- Injected front & rubber non-slip temples keep the frames lightweight & firmly on your head
- TR90 frames are durable, flexible, hypoallergenic & impact-resistant
- Auto-lock stop hinge allows the temples to lock securely in place for a sturdy fit
- Water & smudge resistant lens coating
- Temple tip holes for easy paring with most lanyards
- All UA Eyewear defends against 100% of harmful UVA/B/C rays
- 3 year warranty against any material or manufacturing defects

POLARIZED

205644807766C

CORE

20564400376KA

MIRROR

20564409V76W1



20564463M76V8



20564484J76B3



205644NIC76PC

TUNED BASEBALL

205644WWK76W1

POLARIZED	DESCRIPTION	PRICE
205644807766C	MATTE BLACK FRAME WITH GRAY POLARIZED LENSES	\$120.00
CORE	DESCRIPTION	PRICE
20564400376KA	MATTE BLACK FRAME WITH GRAY LENSES	\$90.00
MIRROR	DESCRIPTION	PRICE
20564409V76W1	MATTE METALLIC DOWNPOUR GRAY FRAME WITH LIGHT BLUE MIRROR LENSES	\$90.00
20564463M76V8	MATTE TRANSPARENT PITCH GRAY FRAME WITH EMERALD MIRROR LENSES	\$90.00
20564484J76B3	SHINY BLACK FRAME WITH INFRARED MIRROR LENSES	\$90.00
205644NIC76PC	SHINY WHITE FRAME WITH BRIGHT PURPLE MIRROR LENSES	\$90.00
TUNED BASEBALL	DESCRIPTION	PRICE
205644WWK76W1	MATTE WHITE FRAME WITH BASEBALL TUNED BLUE MIRROR LENSES	\$100.00

UA SKILLZ

FIRST SHIP:C/O

- SPECIFIC SKU: UA Polarized lenses eliminate glare for clearer vision & reduced eye fatigue without color distortion
- SPECIFIC SKU: Mirror coating offers improved sun protection, durability & scratch resistance
- SPECIFIC SKU: UA Tuned™ Baseball lenses provide contrast enhancement to spot & track the ball more precisely
- Fully-adjustable UA ArmourGrip nose pads have a lasered engraving for ultimate comfort & stability
- Meets ANSI Z87.1 industrial standards for high-mass & high-velocity impact protection
- Injected front & temples with non-slip rubber trim keeps the frames on your head
- TR90 frames are durable, flexible, hypoallergenic & impact-resistant
- Auto-lock stop hinge allows the temples to lock securely in place for a sturdy fit
- Water- & smudge-resistant coating makes the lenses easier to clean with clearer optics
- Maximum lens coverage shields your eyes with ultimate UV A/B protection in all directions

POLARIZED	DESCRIPTION	PRICE
20662506W806C	MATTE BLACK FRAME WITH GRAY POLARIZED LENSES	\$120.00
CORE	DESCRIPTION	PRICE
20662500380KA	MATTE BLACK FRAME WITH GRAY LENSES	\$90.00
MIRROR	DESCRIPTION	PRICE
2066254WC80B3	MATTE METALLIC GUNMETAL FRAME WITH INFRARED MIRROR LENSES	\$90.00
2066257JX802B	MATTE WHITE FRAME WITH GOLD MIRROR LENSES	\$90.00
TUNED BASEBALL	DESCRIPTION	PRICE
206625HYM80W1	MATTE WHITE FRAME WITH BASEBALL TUNED BLUE MIRROR LENSES	\$100.00

POLARIZED



20662506W806C

CORE



20662500380KA

MIRROR



2066254WC80B3



2066257JX802B

TUNED BASEBALL



206625HYM80W1

NEW**DEFINE**

FIRST SHIP:8/1/2024

- Mirror coating offers improved sun protection, durability & scratch resistance (All SKU's)
- Built-in rubber nose pads lay flush to prevent hair snagging or pulling when wearing on your head
- Injected front & temples with non-slip rubber trim keeps the frames on your head
- TR90 frames are durable, flexible, hypoallergenic & impact-resistant
- Auto-lock stop hinge allows the temples to lock securely in place for a sturdy fit
- Temple Tip Holes for easy Pairing with most lanyards
- All UA Eyewear Protects against 100% of Harmful UV A/B Rays
- 3 year warranty against any material or manufacturing defects

MIRROR	DESCRIPTION	PRICE
2071845BF99T5	MATTE IRIDESCENT PETROL FRAME WITH GREEN/BLUE MULTI-LAYER MIRROR LENSES	\$100.00
2071847JX99VP	MATTE WHITE FRAME WITH GOLD MIRROR LENSES	\$100.00
2071841JZ99Z9	MATTE TRANSPARENT LAVISH FRAME WITH GREEN MULTI-LAYER MIRROR LENSES	\$100.00
2071843H29934	SHINY BLACK FRAME WITH BRIGHT PINK MIRROR LENSES	\$100.00

MIRROR

2071845BF99T5

2071847JX99VP



2071841JZ99Z9

2071843H29934

UA HUSTLE

FIRST SHIP:C/O

- Rubber nose pads for ultimate comfort
- Injected front & temples with non-slip rubber trim keeps the frames on your head
- TR90 frames are durable, flexible, hypoallergenic & impact-resistant
- Auto-lock stop hinge allows the temples to lock securely in place for a sturdy fit
- Adjustable temples auto-form around your head for a gentle grip & custom fit
- All UA Eyewear defends against 100% of harmful UVA/B/C rays
- 3 year warranty against any material or manufacturing defects

POLARIZED	DESCRIPTION	PRICE
20409000357M9	MATTE BLACK FRAME WITH POLARIZED GREY LENSES	\$110.00
20409001T57YJ	MATTE BLACK FRAME WITH BLUE MIRROR POLARIZED LENSES	\$120.00
CORE	DESCRIPTION	PRICE
20409080757KU	SHINY BLACK FRAME WITH BLUE LENSES	\$80.00
MIRROR	DESCRIPTION	PRICE
204090RC257UZ	MATTE BLACK FRAME WITH ORANGE MIRROR LENSES	\$90.00
204090MNG57Z9	SHINY CRYSTAL FRONT, GREY HAVANA TEMPLE FRAME WITH GREEN MIRROR LENSES	\$90.00
TUNED GOLF	DESCRIPTION	PRICE
20409008A57V8	SHINY BLACK FRAME WITH GREEN-BLUE GOLF TUNED LENSES	\$100.00

POLARIZED

20409000357M9

20409001T57YJ

CORE

20409080757KU

MIRROR

204090RC257UZ

204090MNG57Z9

TUNED GOLF

20409008A57V8

UA GAMEDAY

FIRST SHIP:C/O

- Fully-adjustable UA ArmourGrip nose pads have a lasered engraving for ultimate comfort & stability
- Injected front & temples with non-slip rubber trim keeps the frames on your head
- TR90 frames are durable, flexible, hypoallergenic & impact-resistant
- Auto-lock stop hinge allows the temples to lock securely in place for a sturdy fit
- Water & smudge-resistant coating makes the lenses easier to clean with clearer optics
- Comes with a soft microfiber pouch to keep your eyewear clean & protected
- All UA Eyewear Protects against 100% of Harmful UV A/B Rays
- 3 Year Warranty against any material or manufacturing defects

CORE	DESCRIPTION	PRICE
20476280799KA	SHINY BLACK FRAME WITH GRAY LENS	\$80.00
MIRROR	DESCRIPTION	PRICE
2047620039950	MATTE BLACK FRAME WITH ORANGE MIRROR LENS	\$80.00
20476263M99QI	MATTE TRANSPARENT CONCRETE FRAME WITH SILVER MIRROR LENS	\$80.00
2047621IZ99Z9	MATTE TRANSPARENT LAVISH FRAME WITH GREEN/PURPLE MULTI-LAYER MIRROR LENSES	\$80.00
2047622QU99JO	MATTE KHAKI BASE FRAME WITH DARK GOLD MIRROR LENSES	\$80.00
TUNED BASEBALL	DESCRIPTION	PRICE
204762WWK99W1	MATTE WHITE FRAME WITH TUNED BLUE BASEBALL LENS	\$90.00

CORE



20476280799KA

MIRROR



2047620039950



20476263M99QI



2047621IZ99Z9

NEW



2047622QU99JO

NEW

TUNED BASEBALL



204762WWK99W1

UA YARD PRO

FIRST SHIP:C/O

- SPECIFIC SKU: UA Tuned™ Baseball lenses provide contrast enhancement to spot & track the ball more precisely
- Fully-adjustable UA ArmourGrip nose pads have a lasered engraving for ultimate comfort & stability
- Meets ANSI Z87.1 industrial standards for high-mass & high-velocity impact protection
- Injected front & rubber non-slip temples keep the frames lightweight & firmly on your head
- TR90 frames are durable, flexible, hypoallergenic & impact-resistant
- Auto-lock stop hinge allows the temples to lock securely in place for a sturdy fit
- Water & smudge resistant lens coating
- Temple tip holes for easy paring with most lanyards
- All UA Eyewear defends against 100% of harmful UVA/B/C rays
- 3 year warranty against any material or manufacturing defects

MIRROR	DESCRIPTION	PRICE
2056430IE99V8	MATTE TRANSPARENT LIME SURGE FRAME WITH EMERALD MULTI-LAYER MIRROR LENSES	\$100.00
205643D5199W1	SHINY BLACK FRAME WITH BLUE MULTI-LAYER MIRROR LENSES	\$100.00
205643ZE399B3	MATTE MIDNIGHT NAVY FRAME WITH INFRARED MULTI-LAYER MIRROR LENSES	\$100.00
TUNED BASEBALL	DESCRIPTION	PRICE
2056436HT9950	MATTE WHITE FRAME WITH BASEBALL TUNED ORANGE MIRROR LENSES	\$110.00
205643WWK99W1	MATTE WHITE FRAME WITH BASEBALL TUNED BLUE MIRROR LENSES	\$110.00

MIRROR



2056430IE99V8



205643D5199W1



205643ZE399B3

TUNED BASEBALL



2056436HT9950



205643WWK99W1

UA LEVEL UP

FIRST SHIP:C/O

- SPECIFIC SKU: Mirror coating offers improved sun protection, durability & scratch resistance
- SPECIFIC SKU: UA Tuned™ Baseball lenses provide contrast enhancement to spot & track the ball more precisely
- Fully-adjustable UA ArmourGrip nose pads have a lasered engraving for ultimate comfort & stability
- Meets ANSI Z87.1 industrial standards for high-mass & high-velocity impact protection
- Injected front & temples with non-slip rubber trim keeps the frames on your head
- TR90 frames are durable, flexible, hypoallergenic & impact-resistant
- Auto-lock stop hinge allows the temples to lock securely in place for a sturdy fit
- Water- & smudge-resistant coating makes the lenses easier to clean with clearer optics
- Lens Vents keep air flowing across your lenses, eliminating fog & moisture build-up
- Maximum lens coverage shields your eyes with ultimate UV A/B protection in all directions

CORE	DESCRIPTION	PRICE
20662600399KA	MATTE BLACK FRAME WITH GRAY LENSES	\$100.00
MIRROR	DESCRIPTION	PRICE
2066262M2992B	MATTE BLACK FRAME WITH GOLD MIRROR LENSES	\$100.00
20662671C99B3	MATTE BLACK AND HI-VIS YELLOW FRAME WITH INFRARED MIRROR LENSES	\$100.00
206626A1W9980	MATTE PHOENIX FIRE FRAME WITH BRIGHT PINK MIRROR LENSES	\$100.00
206626W0P99V8	MATTE HI-VIS YELLOW AND MATTE CAPRI FRAME WITH EMERALD GREEN MIRROR LENSES	\$100.00
TUNED BASEBALL	DESCRIPTION	PRICE
206626WWK99W1	MATTE WHITE AND RED FRAME WITH BASEBALL TUNED BLUE MIRROR LENSES	\$110.00

CORE

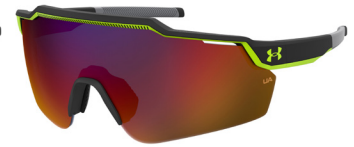


20662600399KA

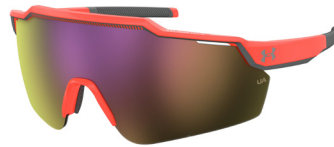
MIRROR



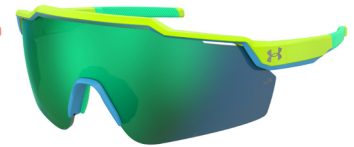
2066262M2992B



20662671C99B3



206626A1W9980



206626W0P99V8

TUNED BASEBALL



206626WWK99W1

UA ASSIST 2

FIRST SHIP:C/O

- TRITAN RENEW™ injected front & temples use a BPA-free plastic with up to 50% recycled content
- TRITAN TR18 lenses are BPA-free & impact-resistant
- Rubber non-slip nose pads for ultimate comfort
- Silicone sleeve temple tips help keep the frames in place & provide extra comfort
- Durable, flexible, hypoallergenic & impact-resistant frame
- Auto-lock stop hinge allows the temples to lock securely in place for a sturdy fit
- Comes with a soft microfiber pouch to keep your eyewear clean & protected
- All UA Eyewear defends against 100% of harmful UVA/B rays
- 3 year warranty against any material or manufacturing defects

POLARIZED	DESCRIPTION	PRICE
20529308A57M9	MATTE BLACK FRAME WITH GRAY POLARIZED LENSES	\$110.00
20529309V57JY	TRANSPARENT MOD GREY FRAME WITH DARK BLUE MIRROR POLARIZED LENSES	\$110.00
CORE	DESCRIPTION	PRICE
20529300357IR	MATTE BLACK FRAME WITH GREY LENSES	\$80.00
MIRROR	DESCRIPTION	PRICE
20529380757Z9	BLACK FRAME WITH EMERALD MIRROR LENSES	\$90.00
2052930VK57Z0	MATTE BLACK FRAME WITH BLUE CHROME MIRROR LENSES	\$90.00
20529390057DC	CRYSTAL CLEAR FRAME WITH SILVER CHROME MIRROR LENSES	\$90.00

POLARIZED



20529308A57M9

20529309V57JY

CORE



20529300357IR

MIRROR



20529380757Z9

2052930VK57Z0

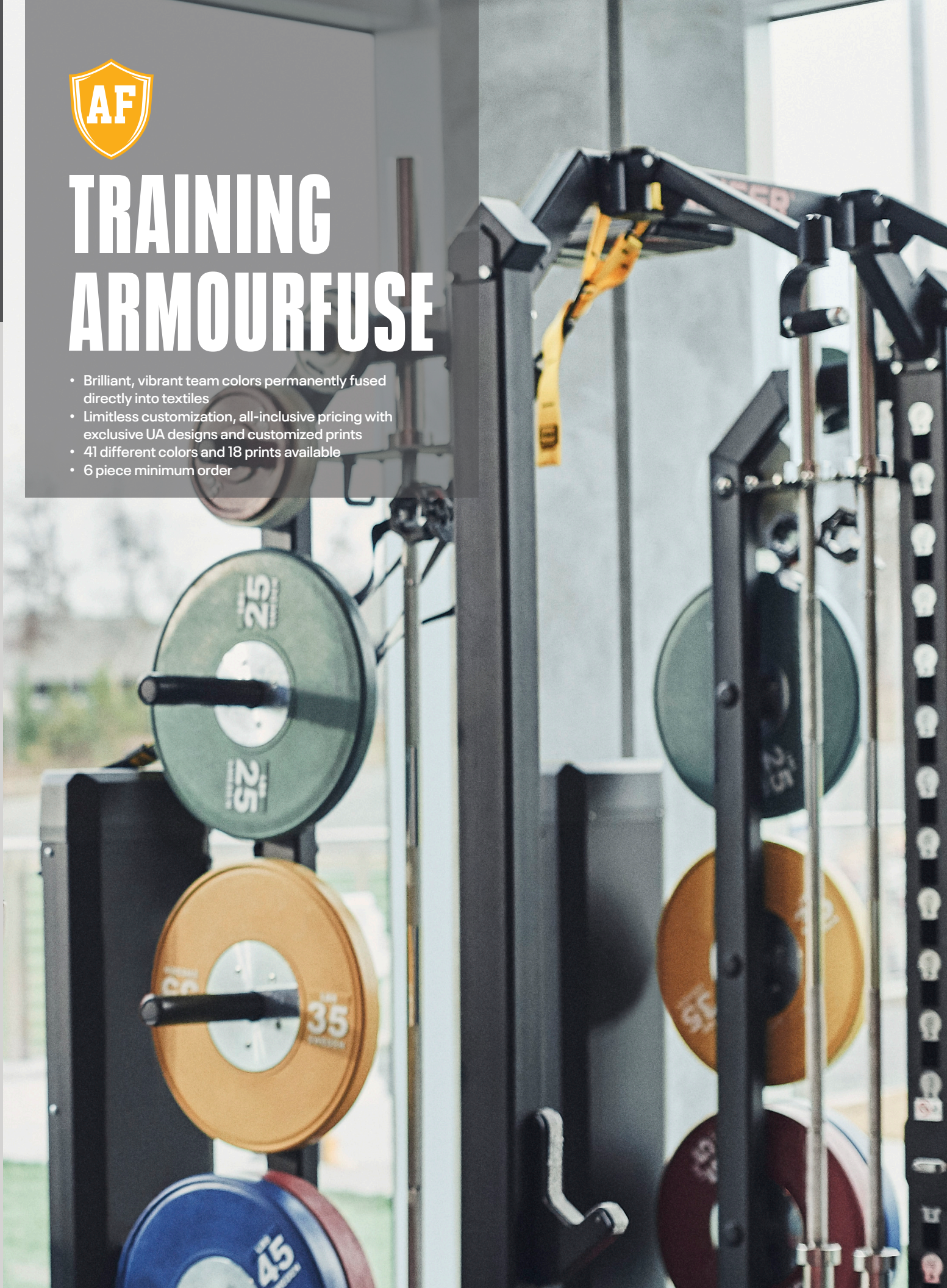


20529390057DC



TRAINING ARMOURFUSE

- Brilliant, vibrant team colors permanently fused directly into textiles
- Limitless customization, all-inclusive pricing with exclusive UA designs and customized prints
- 41 different colors and 18 prints available
- 6 piece minimum order



AF TRAINING HOODY

XS-2XL, OVERSIZE 3XL-4XL, YSM-YXL

STYLE	SIZE	PRICE
UJGSLHM (M)	XS-2XL	\$122.00
UJGSLHY (Y)	YSM-YXL	\$111.50

OVERSIZED SURCHARGE +\$5 PER SIZE
ADDITIONAL LENGTH OPTIONS FOUND ON PAGE 64



SPEED

NEW DESIGN FIRST SHIP: 6/1/2024



SPRINT



SCOUT



UA ECLIPSE



AF LONGSLEEVE HOODED SHOOTER

XS-2XL, OVERSIZE 3XL-4XL, YSM-YXL

STYLE	SIZE	PRICE
UJGTHDM (M)	SM-2XL	\$119.00
UJGTHDY (Y)	YSM-YXL	\$114.00

- New lightweight 4.8 oz. fabric with increased stretch for ultimate comfort

OVERSIZED SURCHARGE +\$5 PER SIZE
ADDITIONAL LENGTH OPTIONS FOUND ON PAGE 64



SPEED

NEW DESIGN FIRST SHIP: 6/1/2024

AF SHORTSLEEVE HOODED SHOOTER

XS-2XL, OVERSIZE 3XL-4XL, YSM-YXL

STYLE	SIZE	PRICE
UJGTSSM (M)	SM-2XL	\$114.00
UJGTSSY (Y)	YSM-YXL	\$109.00

- New lightweight 4.8 oz. fabric with increased stretch for ultimate comfort

OVERSIZED SURCHARGE +\$5 PER SIZE
ADDITIONAL LENGTH OPTIONS FOUND ON PAGE 64



SPEED

NEW DESIGN FIRST SHIP: 6/1/2024

AF SLEEVELESS HOODED SHOOTER

XS-2XL, OVERSIZE 3XL-4XL

STYLE	SIZE	PRICE
UJGTHVM (M)	SM-2XL	\$94.00

- New lightweight 4.8 oz. fabric with increased stretch for ultimate comfort

OVERSIZED SURCHARGE +\$5 PER SIZE
ADDITIONAL LENGTH OPTIONS FOUND ON PAGE 64



SPEED

NEW DESIGN FIRST SHIP: 6/1/2024

AF SHORTSLEEVE ¼ ZIP

XS-2XL, OVERSIZE 3XL-4XL

STYLE	SIZE	PRICE
UJGQZVM (M)	SM-2XL	\$120.00

OVERSIZED SURCHARGE +\$5 PER SIZE
ADDITIONAL LENGTH OPTIONS FOUND ON PAGE 64



SPEED

NEW DESIGN FIRST SHIP: 6/1/2024





SPRINT



SCOUT



UA ECLIPSE



SPRINT



SCOUT



UA ECLIPSE



SPRINT



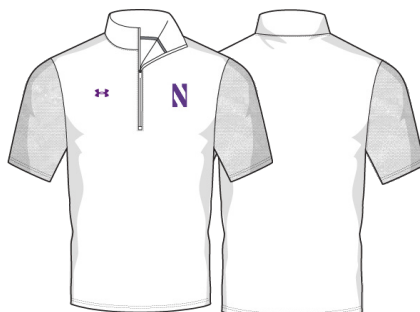
SCOUT



UA ECLIPSE



SPRINT



SCOUT



UA ECLIPSE



AF TRAINING ¼ ZIP

XS-2XL, OVERSIZE 3XL-4XL

- New lightweight 4.8 oz. fabric with increased stretch for ultimate comfort

STYLE	SIZE	PRICE
UJGQZLM (M)	SM-2XL	\$130.00

OVERSIZED SURCHARGE +\$5 PER SIZE
 ADDITIONAL LENGTH OPTIONS FOUND ON PAGE 64



SPEED
 NEW DESIGN FIRST SHIP: 6/1/2024

AF TRAINING LONGSLEEVE TEE

XS-2XL, OVERSIZE 3XL-4XL, YSM-YXL

STYLE	SIZE	PRICE
UJGJL2M (M)	XS-2XL	\$90.00
UJGJL2Y (Y)	YSM-YXL	\$86.00

- New lightweight 4.8 oz. fabric with increased stretch for ultimate comfort

OVERSIZED SURCHARGE +\$5 PER SIZE
 ADDITIONAL LENGTH OPTIONS FOUND ON PAGE 64



SPEED
 NEW DESIGN FIRST SHIP: 6/1/2024

AF TRAINING SHORTSLEEVE TEE

XS-2XL, OVERSIZE 3XL-4XL, YSM-YXL

LOOSE S T	SIZE	PRICE
UJGS2M (M)	XS-2XL	\$75.00
UJGS2Y (Y)	YSM-YXL	\$71.00

- New lightweight 4.8 oz. fabric with increased stretch for ultimate comfort

OVERSIZED SURCHARGE +\$5 PER SIZE
 ADDITIONAL LENGTH OPTIONS FOUND ON PAGE 64



SPEED
 NEW DESIGN FIRST SHIP: 6/1/2024

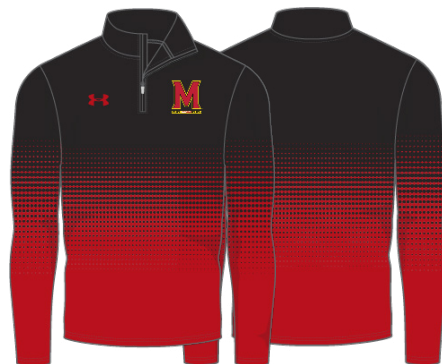




SPRINT



SCOUT



UA ECLIPSE



SPRINT



SCOUT



UA ECLIPSE



SPRINT



SCOUT



UA ECLIPSE



NEW

AF TRAINING SHORTS

FIRST SHIP: 10/25/2024 // XS-2XL, OVERSIZE 3XL-5XL, YSM-YXL

POCKETED SHORT	SIZE	PRICE
UJGS3PM (M)	XS-2XL	\$75.00
UJGS3PY (Y)	YSM-YXL	\$70.00

NON-POCKETED SHORT	SIZE	PRICE
UJGS3M (M)	XS-2XL	\$70.00
UJGS3Y (Y)	YSM-YXL	\$65.00

9" INSEAM FOR POCKETED AND NON-POCKETED SHORT
OVERSIZED SURCHARGE +\$5 PER SIZE
ADDITIONAL LENGTH OPTIONS FOUND ON PAGE 64



SPEED

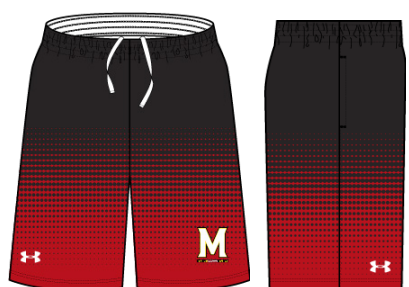
NEW DESIGN FIRST SHIP: 6/1/2024



SPRINT



SCOUT



UA ECLIPSE



AF TRAINING COMPRESSION SLEEVELESS

XS-2XL, OVERSIZE 3XL-4XL

STYLE	SIZE	PRICE
UJGCB (M)	XS-2XL	\$65.00

OVERSIZED SURCHARGE +\$5 PER SIZE
ADDITIONAL LENGTH OPTIONS FOUND ON PAGE 64



SPEED

NEW DESIGN FIRST SHIP: 6/1/2024



SPRINT



SCOUT



UA ECLIPSE



HALF SLEEVE



SPEED

NEW DESIGN FIRST SHIP: 6/1/2024

AF TRAINING COMPRESSION HALF SLEEVE

XS-2XL, OVERSIZE 3XL-4XL

STYLE	SIZE	PRICE
UJGHBL (M)	XS-2XL	\$70.50

OVERSIZED SURCHARGE +\$5 PER SIZE
ADDITIONAL LENGTH OPTIONS FOUND ON PAGE 64



SPRINT

AF TRAINING COMPRESSION SHORTSLEEVE

XS-2XL, OVERSIZE 3XL-4XL

STYLE	SIZE	PRICE
UJGTBL (M)	XS-2XL	\$65.00

OVERSIZED SURCHARGE +\$5 PER SIZE
ADDITIONAL LENGTH OPTIONS FOUND ON PAGE 64



SCOUT

AF TRAINING COMPRESSION LONGSLEEVE

XS-2XL, OVERSIZE 3XL-4XL

STYLE	SIZE	PRICE
UJGCLS (M)	XS-2XL	\$75.50

OVERSIZED SURCHARGE +\$5 PER SIZE
ADDITIONAL LENGTH OPTIONS FOUND ON PAGE 64



UA ECLIPSE



SHORTSLEEVE



SPEED

NEW DESIGN FIRST SHIP: 6/1/2024

LONGSLEEVE



SPEED

NEW DESIGN FIRST SHIP: 6/1/2024



SPRINT



SPRINT



SCOUT



SCOUT



UA ECLIPSE



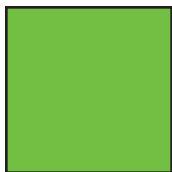
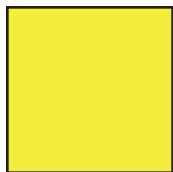


UA ECLIPSE

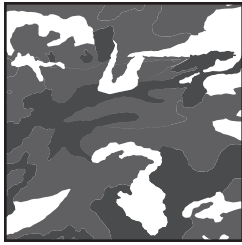
ARMOUR FUSE

						
WHITE	BLACK	PITCH GRAY	GRAPHITE	BASEBALL GRAY	SILVER GRAY	OCEAN STORM
						
MIDNIGHT NAVY	ROYAL	POWDERKEG BLUE	ELECTRIC BLUE	CAPRI	CAROLINA BLUE	COASTAL TEAL
						
PURPLE	MAROON	CARDINAL	CRIMSON	UNIVERSITY RED	TROPIC PINK	
						
PINK	VINTAGE WHITE	TAXI	STEELTOWN GOLD	TENNESSEE ORANGE	DARK ORANGE	
						
TEXAS ORANGE	CLEVELAND BROWN	GOLD RUSH	TEAM VEGAS GOLD	GRAYSTONE	MILITARY GREEN	
						
FOREST GREEN	TEAM KELLY GREEN	MIAMI TEAL	SEA GLASS	POISON		

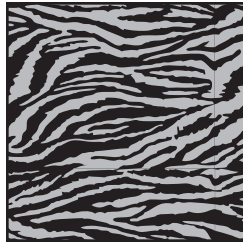
FLUORESCENTS (NOT CURRENTLY AVAILABLE IN TONAL PRINTS OR ON GAMEDAY PRODUCT)

			
ORANGE FLUORESCENT	PINK FLUORESCENT	GREEN FLUORESCENT	YELLOW FLUORESCENT

Prints available in all ArmourFuse colors. (Fluorescents not currently available in tonal prints)



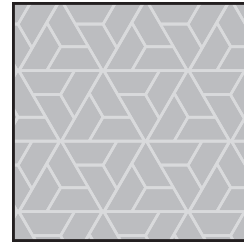
WOODLAND CAMO



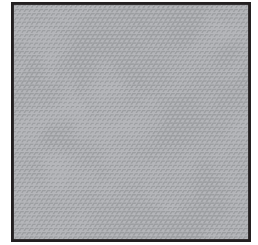
BENGAL



BLUR



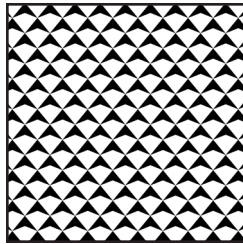
RAZOR



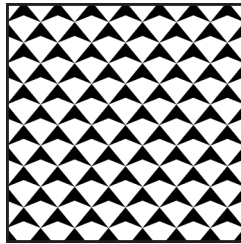
SCALE



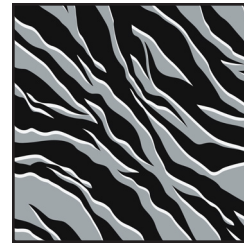
SPLINTER



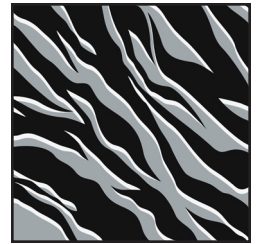
SHIELD MICRO



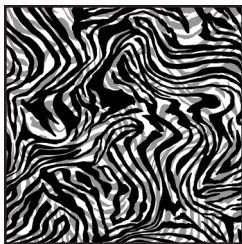
SHIELD MID



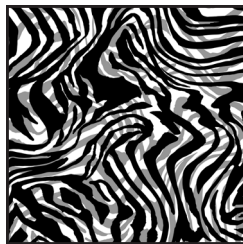
TIGER MICRO



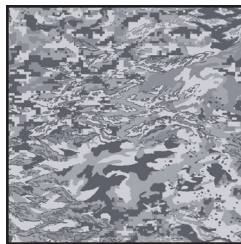
TIGER MACRO



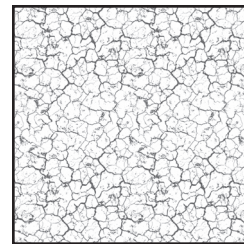
ZEBRA MICRO



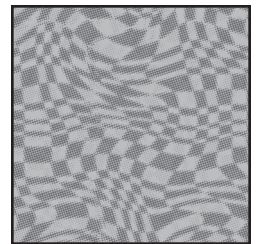
ZEBRA MACRO



ABC CAMO



CRACKLE



HAFITONE CHECKER



TIGER CAMO



FLORAL
(Not available on Gameday)

DESERT CAMO (LOCKED COLOR COMBINATIONS, CANNOT BE ALTERED)



DESERT
WOODLAND CAMO

STOCK DECORATION OPTIONS

SCREEN PRINT	ONE COLOR	TWO COLORS
Team Name	\$5.50	\$10.50
Team Mascot/Logo	\$5.50	\$10.50
Front + Back Numbers	\$12.00	\$17.00

TWILL	ONE COLOR	TWO COLORS
Team Name	\$22.00	\$27.00
Front + Back Numbers	\$27.00	\$32.00
Player Names	\$22.00	
ArmourFuse Twill Patch (Max 3"x3")	\$11.00	\$11.00

EMBROIDERY	ONE COLOR	TWO COLORS
Team Name (up to 2")	\$10.00	\$10.00

see page 64 for Embroidered Mascot/Logo pricing

ADDITIONAL STOCK OPTIONS & NOTES

- Player Numbers Per Location = 1/2 of above
"Front + Back Numbers" pricing
- Player Name Directly On Jersey Only (No Nameplates)
- ArmourFuse Twill = Twill Pricing +\$10
- Add Tail to Script Font Twill Team Name +\$10
- Add Embroidery to Twill Tail +\$10
- Non-Stock designs and lettering may require additional charge at Under Armour's discretion (call for quote)

FONT OPTIONS

BADGER

ABCDEFGHIJKLMNOPQRSTUVWXYZ
0123456789

BEAR

ABCDEFGHIJKLMNOPQRSTUVWXYZ
0123456789

CADET

ABCDEFGHIJKLMNOPQRSTUVWXYZ
0123456789

FULL BLOCK

ABCDEFGHIJKLMNOPQRSTUVWXYZ
0123456789

TERRAFONT

ABCDEFGHIJKLMNOPQRSTUVWXYZ
0123456789

PREMIER

ABCDEFGHIJKLMNOPQRSTUVWXYZ
0123456789

TUSCAN

ABCDEFGHIJKLMNOPQRSTUVWXYZ
0123456789

UNDENIABLE

ABCDEFGHIJKLMNOPQRSTUVWXYZ
0123456789

UA COLLEGIATE SANS

ABCDEFGHIJKLMNOPQRSTUVWXYZ
0123456789

UA COLLEGIATE SANS CONDENSED

ABCDEFGHIJKLMNOPQRSTUVWXYZ
0123456789

UA COLLEGIATE SERIF

ABCDEFGHIJKLMNOPQRSTUVWXYZ
0123456789

UA COLLEGIATE SERIF CONDENSED

ABCDEFGHIJKLMNOPQRSTUVWXYZ
0123456789

MODERN

ABCDEFGHIJKLMNOPQRSTUVWXYZ
0123456789

ATHLETIC SCRIPT

ABCDEFGHIJKLMNOPQRSTUVWXYZ
abcdefghijklmnopqrstuvwxyz

SWINGMAN

ABCDEFGHIJKLMNOPQRSTUVWXYZ
abcdefghijklmnopqrstuvwxyz

NOTE:

- Gameday Select Package Pricing now includes all of the above listed fonts
- Dropped fonts available for fill-in orders only

LETTERING ARRANGEMENTS

STRAIGHT

TEAMNAME

BRIDGED

TEAMNAME

ARCH

TEAMNAME

VERTICAL ARCH

TEAMNAME

SCRIPT WITH TAIL

Teamname

GAMEDAY OPTIONS

3/16" 1-COLOR PIPE					1/2" 3-COLOR BRAID			INCLUDED PIPE/BRAID	OPTIONAL PANT ALTERATIONS	LIST PRICE
					1 2 3	ANY COMBO OF PIPE COLORS	1. Jersey Front	Reduce Knicker Inseam 2" and Hem w/ Elastic	\$0.00	
							Around Neck	Increase Knicker Inseam 2" and Hem w/ Elastic	\$0.00	
							OR	Increase Knicker Inseam 4" and Hem w/ Elastic*	\$15.00	
							Around Placket	Reduce Relaxed/Tapered Inseam 2" and Hem	\$0.00	
							None	Increase Relaxed/Tapered Inseam 2" and Hem	\$0.00	
							2. Jersey Sleeves	Increase Relaxed/Tapered Inseam 4" and Hem*	\$15.00	
							Sleeve Ends			
							OR			
							None			
							3. Pants			
							Down Side			
							OR			
							None			

OPTIONAL ARMOURFUSE® TWILL (L X H)		LIST PRICE
Custom Font Team Name (Max. 14" x 4.25")		\$10.00
Custom Left Chest Team Logo (Max. 4" x 5")		\$15.00
Custom Sleeve Patch (Max. 4" x 4")		\$15.00
Custom Back Neck Patch (Max. 3" x 2")		\$15.00
Player Name (On Nameplate)		\$40.00
Player Name Directly on Jersey (No Nameplate)		\$30.00
Blank Nameplate		\$7.00
Add Tail to Script Font Team Name		\$20.00
Add Text to Script Font Tail		\$20.00

Note: Vector art must be provided for custom Armourfuse® Twill or additional artwork charges will apply

*Available on Men's styles only

STOCK OPTIONS

3/16" 1-COLOR PIPE	LIST PRICE
Around Placket (UBJ316P)	\$17.00
Sleeve Ends (UBJ316S)	\$17.00
Down Side (UBP316D)	\$17.00

1/2" 3-COLOR BRAID	LIST PRICE
Around Placket (UBJ12AP)	\$17.00
Around Neck (UBJ12NB)	\$17.00
Sleeve Ends (UBJ12SE)	\$17.00
Down Sides (UBP12DS)	\$17.00

NOTE: Additional leadtime should be expected for orders including piping, braiding and/or hemming. Please contact a UA Sale Rep for updates.

PIPE & BRAID AVAILABLE COLORS

Pipe 3/16"						
	WHITE	BLACK	MIDNIGHT NAVY	UNIVERSITY RED	ROYAL	FOREST GREEN
Braid 1/2"						
	MAROON	PURPLE	DARK ORANGE	CARDINAL	TEAM VEGAS GOLD	
	BK/WH/BK	NA/WH/NA	SC/WH/SC	RO/WH/RO		
	DG/WH/DG	MA/WH/MA	PU/WH/PY	OR/WH/OR		
CA/WH/CA	VG/WH/VG					

ADDITIONAL LENGTH OPTIONS (ARMOURFUSE ONLY - \$10 FOR ALL -/+ OPTIONS)

BASEBALL/SOFTBALL

TYPE	ADJUSTMENT	CODE
JERSEYS	Add 2" body length	UJX2BDY
	Add 4" body length	UJX4BDY
PANTS	Subtract 2" from inseam	UJSHTN2
	Add 2" to inseam length	UJX2INS
	Add 4" to inseam length	UJX4INS

FOOTBALL

TYPE	ADJUSTMENT	CODE
JERSEYS	Shorten to waist length	
PANTS	Add 2" to inseam length	UJX2INS

LACROSSE/ FIELD HOCKEY

TYPE	ADJUSTMENT	CODE
JERSEYS	Add 2" body length	UJX2BDY
SHORTS	Subtract 1" from inseam	UJSHTN1
	Subtract 2" from inseam	UJSHTN2
	Add 1" to inseam length	UJX1INS
	Add 2" to inseam length	UJX2INS
KILTS	Add 1" to inseam length	UJX1INS
	Add 2" to inseam length	UJX2INS

BASKETBALL

TYPE	ADJUSTMENT	CODE
JERSEYS	Add 2" body length	UJX2BDY
	Add 4" body length	UJX4BDY
	Add 6" body length	UJX6BDY
SHORTS	Subtract 1" from inseam	UJSHTN1
	Add 1" to inseam length	UJX1INS
	Add 2" to inseam length	UJX2INS
	Add 3" to inseam length	UJX3INS
SHOOTING SHIRTS	Add 2" body, 1" sleeve	UJX2B1S
	Add 4" body, 2" sleeve	UJX4B2S
	Add 6" body, 3" sleeve	UJX6B3S

SOCCER

TYPE	ADJUSTMENT	CODE
JERSEYS	Add 2" body length	UJX2BDY
SHORTS	Subtract 1" from inseam	UJSHTN1
	Subtract 2" from inseam	UJSHTN2
	Add 1" to inseam length	UJX1INS
	Add 2" to inseam length	UJX2INS

TRACK & FIELD

TYPE	ADJUSTMENT	CODE
JERSEYS	Add 2" body length	UJX2BDY
LOOSE SHORTS*	Subtract 1" from inseam Add 1" to inseam length	UJSHTN1 UJX1INS

*UJTS2M & UJTS2W ONLY

TRAINING

TYPE	ADJUSTMENT	CODE
JERSEYS	Add 2" body length	UJX2BDY
	Add 4" body length	UJX4BDY
	Add 6" body length	UJX6BDY
SHORTS	Subtract 1" from inseam	UJSHTN1
	Subtract 2" from inseam	UJSHTN2
	Add 1" to inseam length	UJX1INS
	Add 2" to inseam length	UJX2INS
	Add 3" to inseam length	UJX3INS

VOLLEYBALL

TYPE	ADJUSTMENT	CODE
JERSEYS	Add 2" body length	UJX2BDY
SHORTS	Subtract 1" from inseam	UJSHTN1
	Subtract 2" from inseam	UJSHTN2

EMBROIDERY

MASCOTS <small>(STOCK ONLY)</small>	LIST PRICE
Mascot	\$11.00
Mascot with One Line	\$12.00
Mascot with Two Lines	\$13.00
American Flag	\$11.00
Small/Homeplate	\$6.00

DIGITIZING <small>(STOCK AND ARMOURFUSE ONLY)</small>	LIST PRICE
Stock Designs and Lettering	\$180.00
Custom Logos	Call for Quote

- Prices are based upon size of designs, not the number of colors. Prices are subject to change if design exceeds specifications.
- Dimensions are maximum space - unless specifically noted best judgement will be used.
- Letter styles are available horizontal or arched.
- No digitizing charge for team names.

- Flag size up to 2" by 3" (bigger area - call for quote)
- Minimum order charges apply for embroidery
- All designs require an additional digitizing charge, except:
 - 1) Digitized designs supplied on a disk
 - 2) Digitized design is a re-order of an existing design

STANDARD SLEEVE PRINT STRIPES

*OPTIONS - Code numbers listed below stripe patterns

*Stripes may be adjusted to fit smaller garments and not measure exactly as shown.

01: 1/2" STRIPE, 1/2" SPACE, 2" STRIPE, 1/2" SPACE, 1/2" STRIPE

02: 1/2" STRIPE, 1/2" SPACE, 2" STRIPE, 1/2" SPACE, 1/2" STRIPE

05: 3/4" STRIPE, 1/4" SPACE, 3/4" STRIPE, 1/4" SPACE, 3/4" STRIPE, 1/4" SPACE, 3/4" STRIPE, 1/4" SPACE, 3/4" STRIPE, 1/4" SPACE

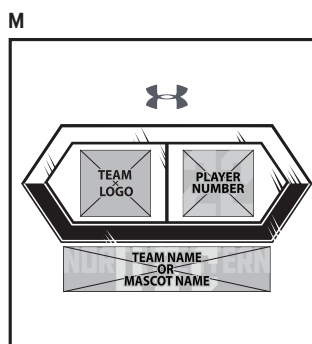
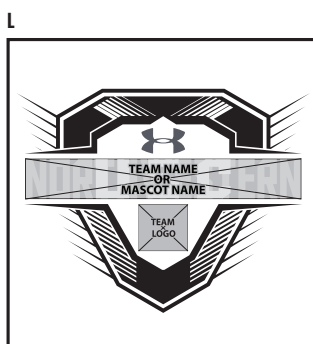
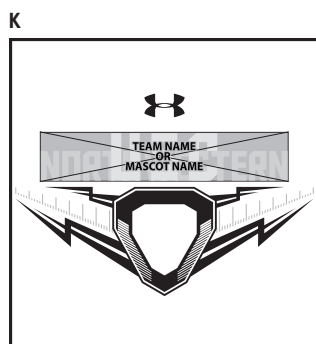
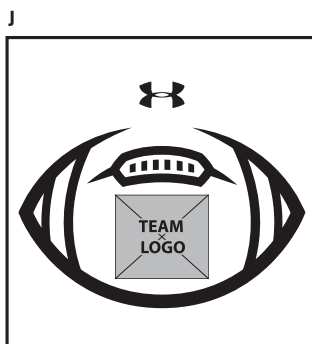
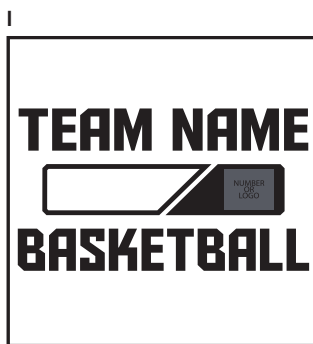
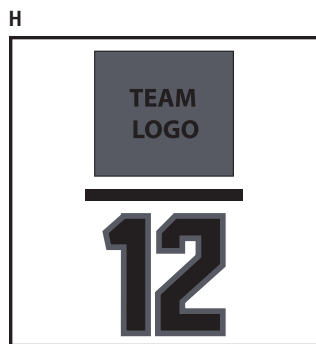
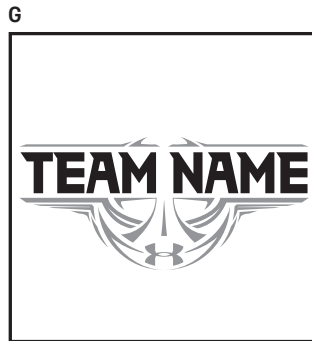
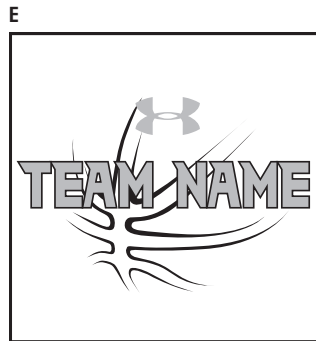
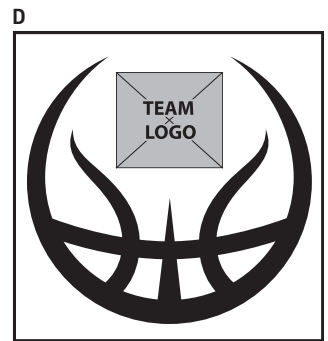
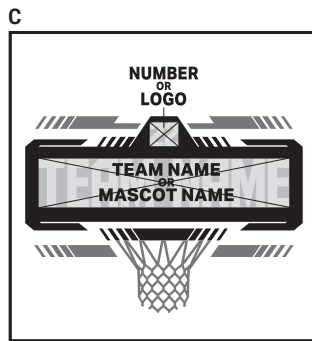
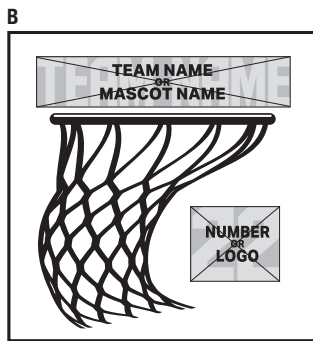
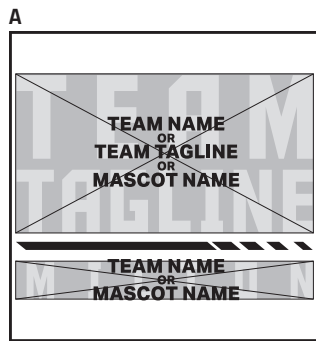
06: 2" STRIPE, 2" STRIPE

07: 1/4" STRIPE, 1" STRIPE, 1/4" STRIPE, 1" STRIPE, 1/4" STRIPE, 1" STRIPE, 1/4" STRIPE, 1" STRIPE, 1/4" STRIPE, 1" STRIPE

08: 1" STRIPE, 1" STRIPE, 1" SPACE, 1" STRIPE, 1" STRIPE

09: 1 1/2" STRIPE, 1 1/2" STRIPE, 1 1/2" STRIPE

ARMOURFUSE® GRAPHIC OPTIONS



UNIFORM CARE INSTRUCTIONS

To enhance the appearance and extend the life of your uniforms, Under Armour recommends that you follow these cleaning and storing procedures:

DO NOT DRY CLEAN

DO NOT WASH IN HOT WATER

DO NOT USE CHLORINE BLEACH

DO NOT USE FABRIC SOFTENER

DO NOT WASH WHITES AND COLORS TOGETHER

DO NOT OVERLOAD THE WASHING MACHINE

DO NOT MACHINE DRY ON HIGH HEAT

DO NOT LEAVE WET OR DAMP GARMENTS IN YOUR TRAVEL BAG, IN A PILE WITH OTHER CLOTHING OR IN WASHING MACHINE

- Pre wash uniform prior to use.
- Uniforms should always be laundered immediately after wearing. However, if this is not possible, rinse garments and hang individually on rust-proof hangers. (Moisture may cause color migration of acid dyes so we advise separating wet or damp uniforms.)
- Belts and any other contrasting color items should be washed separately from the garment.
- It is always advisable to test wash a single uniform according to directions before washing an entire load.
- Wash and rinse all garments in warm water (approx. 110°) with mild detergent. Remove promptly after wash cycle.
- For optimum results, hang garments (especially those with elastane) to dry. If you cannot hang dry, machine dry on the lowest setting. Turn jerseys inside out before machine drying. Remove items from dryer immediately upon completion of the cycle. (Excessive heat can cause fabric shrinkage, discoloration, and cracking and peeling of vinyl plastisol lettering inks.)
- Make sure uniforms are completely dry before storing. Store in a dry area to prevent mildew. Protect them from sunlight and fluorescent light to prevent yellowing.

PLEASE NOTE: Under Armour will not be responsible for uniforms that are damaged due to improper care and maintenance. Failure to follow our specified care instructions will void all guarantees.

UNIFORM FILL-IN LIFECYCLE

LAST SHOWN IN CATALOG	LAST FILL-IN SEASON	LAST FILL-IN SHIP
FA'21	FA'24	12/15/2024
WI'21	WI'24	3/15/2025
SP'22	SP'25	6/15/2025
FA'22	FA'25	12/15/2025
WI'22	WI'25	3/15/2026
SP'23	SP'26	6/15/2026
FA'23	FA'26	12/15/2026
W'23	W'26	3/15/2027
SP'24	SP'27	6/15/2027
FA'24	FA'27	12/15/2027
WI'24	WI'27	3/15/2028
SP'25	SP'28	6/15/2028

G **GAMEDAY TEAM UNIFORMS**
ORDERING INFORMATION AND CUSTOMER SERVICE:
1-800-474-6118
www.uacustomuniforms.com

AF **ARMOURFUSE™ TEAM UNIFORMS**
ORDERING INFORMATION AND CUSTOMER SERVICE:
1-888-871-0990
www.underarmourteamuniforms.com

NX **UA NEXT**
ORDERING INFORMATION AND CUSTOMER SERVICE:
1-888-871-0990
www.underarmourteamuniforms.com

S **STOCK TEAM UNIFORMS**
ORDERING INFORMATION AND CUSTOMER SERVICE:
1-888-871-0990
www.underarmourteamuniforms.com

ORDERING INFORMATION

Guarantee:

The materials and workmanship of our garments are guaranteed when given fair treatment and used under normal conditions.

Color Matching:

Scientifically, it is not possible to achieve a perfect color match from one dye lot to another. Therefore, we cannot guarantee a perfect match from order to order or from one fabric to another.

Color Abbreviation Key:

The following abbreviations may be used when ordering merchandise.

BG Baseball Gray	EB Electric Blue	PI Pink	SI Silver Grey
BK Black	GP Graphite	PK Powderkeg Blue	TI Taxi
BR Brown	KE Team Kelly Green	PO Poison	TE Teal
CA Cardinal	LG Steeltown Gold	PU Purple	TO Texas Orange
CB Carolina Blue	MA Maroon	RO Royal	TP Tropic Pink
CP Capri	NA Midnight Navy	RU Gold Rush	VG Team Vegas Gold
DG Forest Green	OR Dark Orange	SC University Red	WH White

Price Policy:

All catalog prices are list or suggested retail. Prices are subject to change without notice. Merchandise will be invoiced based on the prices in effect at the time the order is placed.

Terms:

Prices are FOB shipping point. Payment is due Net 30.

Minimum Order Charges:

A handling charge of \$10.00 will be added to orders of less than \$150.00 list. Custom and GamedaySelect fill-in minimum order is 6 units per style and color. A 100% surcharge will be applied to orders of 1-2 units, and a 50% surcharge for orders of 3-5 units.

Lettered Orders for COD Shipment:

A 50% deposit is required on all lettered orders calling for COD shipment.

Delivery:

Shipments will always be made by the fastest, least expensive means possible. The customer will assume any additional expense required to expedite delivery.

Order Cancellations:

Cancellations must be received at least one day prior to the ship date. Special order garments cannot be cancelled after they have been cut. Lettered garments cannot be cancelled after they have been printed or sewn.

Returns:

Claims must be reported to our office within 10 working days of merchandise receipt. Returns cannot be made after 30 days of the invoice date. All returns for plain merchandise must be clearly marked with an authorization number or label obtained from our office. All returns for lettered merchandise must be clearly marked "LETTERING." When requesting an authorization label, the following information is required: Reason for return, Invoice #, Style #, Color, Size/Quantity. An authorization label will then be sent to you to prepare the merchandise for return shipment. We reserve the right to repair, replace or issue credit for any merchandise returned. A 15% restocking fee and shipping charges will be charged for merchandise returned that is either not damaged or the damage is determined not to be our fault. All worn garments must be properly laundered prior to return or they will not be accepted.

All custom and custom-stock uniforms may not be returned under any circumstances if delivered properly.

Shortages:

All claims must be made within 10 days of the invoice date.

New Accounts:

All new accounts must be opened through your local sales representative. New accounts that do not have a Dunn and Bradstreet rating will be shipped COD until a credit line has been established.

Samples:

Samples will be entered and billed as a regular order. Samples cannot be returned without prior approval from our office.

Imprint Orders:

All imprint orders must be emailed, mailed or faxed in with detailed instructions on UA order forms. Imprint orders will not be taken by phone. Once garments have been lettered, the order cannot be cancelled or returned.

Under Armour will not be responsible for any items not checked for order accuracy or sizing before being sent to a printer/screener. We will not be responsible for shrinkage, defects, or damages caused during the imprinting of our garments by sources other than our own lettering department. Screenprinting sublimated uniforms can cause color migration. We do not recommend screenprinting on sublimated garments.

Photography is the property of Under Armour and is not to be used without written authorization.

MEN'S

COMPRESSION

FITTED

LOOSE



Ultra-tight, second skin fit that keeps you locked in & makes you feel like you can do anything.



A slimmer, athletic cut that allows total mobility but eliminates the bulk of extra fabric.



Fuller cut for complete comfort, total range of motion & greater breathability.

	US SIZE	CHEST (IN)	WAIST (IN)	HIP (IN)
SM	26-28	34-37	29-31	34-36
MD	30-32	37-41	31-34	36-39
LG	34-36	41-44	34-37	39-42
XL	38-40	44-48	37-41	42-46
2XL	42-44	48-52	41-45.5	46-50
3XL	46-48	52-56	45.5-50	50-54
4XL	50-52	56-60	50-54.5	54-58
5XL	54-56	60-64	54.5-59	58-62

HOW TO MEASURE



CHEST: Place the tape measure under your arms at the fullest part of your chest, wrap around your body until your fingers meet and mark the measurement

WAIST: Measure around your natural waistline – right above your hips. Be careful not to squeeze too tight to allow a little give.

HIPS: With your feet together, measure around the fullest part of your hips to ensure you'll have enough room to move comfortably.

BOYS

FITTED

LOOSE



A slimmer, athletic cut that allows total mobility but eliminates the bulk of extra fabric.



Fuller cut for complete comfort, total range of motion & greater breathability.

	US SIZE	CHEST (IN)	WAIST (IN)	HIP (IN)
YXS	7	25-26	23-24	26-27
YSM	8	26-27	24-25	27-28
YMD	10-12	27-29	25-27	28-31
YLG	14-16	29-32.5	27-30	31-34
YXL	18-20	32.5-35.5	30-33	34-37

HOW TO MEASURE



CHEST: Place the tape measure under your arms at the fullest part of your chest, wrap around your body until your fingers meet and mark the measurement

WAIST: Measure around your natural waistline – right above your hips. Be careful not to squeeze too tight to allow a little give.

HIPS: With your feet together, measure around the fullest part of your hips to ensure you'll have enough room to move comfortably.

WOMEN'S

COMPRESSION



Ultra-tight, second skin fit that keeps you locked in & makes you feel like you can do anything.

FITTED



Sits close to the skin for a streamlined fit without the squeeze of compression.

LOOSE



Fuller, more generous cut for enhanced range of motion & an effortlessly relaxed fit.

	US SIZE	CHEST (IN)	WAIST (IN)	HIP (IN)
XS	0-2	32.5-33.5	25.5-27	34.5-36
S	4-6	33.5-36	27-29	36-38
M	8-10	36-38	29-31	38-40
L	12-14	38-41	31-34	40-43
XL	16	41-44	34-37	43-46
2XL	18	44-47	37-40	46-49
3XL	20	47-50	40-43	49-52
4XL	22	50-53	43-46	52-55

HOW TO MEASURE



CHEST: Place the tape measure under your arms at the fullest part of your chest, wrap around your body until your fingers meet and mark the measurement

WAIST: Measure around your natural waistline – right above your hips. Be careful not to squeeze too tight to allow a little give.

HIPS: With your feet together, measure around the fullest part of your hips to ensure you'll have enough room to move comfortably.

GIRLS

FITTED



Sits close to the skin for a streamlined fit without the squeeze of compression.

LOOSE



Fuller, more generous cut for enhanced range of motion & an effortlessly relaxed fit.

	US SIZE	CHEST (IN)	WAIST (IN)	HIP (IN)
YXS	7	25-26.5	23-24	26-28
YSM	8	26.5-27.5	24-24.5	28-29
YMD	10-12	27.5-30.5	24.5-26.5	29-32.5
YLG	14-16	30.5-34	26.5-30.5	32.5-36.5
YXL	18-20	34-36	30.5-32.5	36.5-38.5

HOW TO MEASURE



CHEST: Place the tape measure under your arms at the fullest part of your chest, wrap around your body until your fingers meet and mark the measurement

WAIST: Measure around your natural waistline – right above your hips. Be careful not to squeeze too tight to allow a little give.

HIPS: With your feet together, measure around the fullest part of your hips to ensure you'll have enough room to move comfortably.

WEST

PAT BAUER
SR. REGIONAL MANAGER
410.299.3798
pbauer@underarmour.com
WA // OR // MT //
ID // AK // WY

JEFF UTTZ
626.484.3496
jeffu@underarmour.com
CA // NV // HI // AZ // UT

HALEY GILLMORE
303.562.6053
hgillmore@underarmour.com
East & North TX // OK // CO

FRANK WEBER
618.540.3955
fweber@underarmour.com
IL // MO // IA // MN //
NE // KS // ND // SD //

BLAKE KUENZI
405.488.4942
blake.kuenzi@underarmour.com
NM // Central, South & West Texas

EAST

FRANK NUNAN
SR. REGIONAL MANAGER
484.576.9777
fnunan@underarmour.com
DE // NJ // Philadelphia area

MONTE GIBBS
662.801.3039
mgibbs@underarmour.com
TN // LA // AL //
MS // AR // KY

DAN WILLIAMS
352.672.1676
dwilliams@underarmour.com
NC // SC // GA // FL

TONY DONOFRIO
419.356.9742
tonydl@underarmour.com
WI // MI // IN // OH // WV

GARY POWERS
410.746.3790
gpowers@underarmour.com
MD // DC // VA // Eastern PA

BOB BARTLETT
315.380.6505
bobb@underarmour.com
NY // Western PA

JAY KELLEHER
443.615.0462
jkelleher@underarmour.com
New England

COLLEGIATE

TOMMY AMICO
951.808.0367
tamico@underarmour.com
WEST

TODD LOCKLEAR
410.454.6572
tlocklear@underarmour.com
EAST

CHRIS PORTS
443.220.1009
cports@underarmour.com
MID ATLANTIC

BELLA GARONE
631.307.0009
isabella.garone@underarmour.com
NORTHEAST

ALEX BRUEGGEMANN
410.652.4337
abrueggemann@underarmour.com
SOUTH

LICENSEES

FOUNDER SPORT GROUP
Stock & Armourfuse Uniforms
www.underarmourteamuniforms.com
888.871.0990
UAStatus@foundersportgroup.com

POWERS ATHLETIC
Custom Uniforms
www.uacustomuniforms.com
800.474.6118
customerservice@powersathletic.com

THE GAME
Custom Headwear
www.uateamheadwear.com
800.723.5656
customerservice@2thegame.com

USB
McDavid & Shock Doctor
Water Bottles
657.383.4438
UA@unitedspb.com

SAFILO
Eyewear
uateamsportsorders@safilo.com



TEL: 1.888.828.1547 / B2B: ARMOURHOUSE.UNDERARMOUR.COM

COLLEGIATE

TEAMSPO RTS COLLEGIATE / TEAMSPO RTS.COLLEGIATE@UNDERARMOUR.COM

EAST

TEAM SPORTS SE / TEAMSPO RTSSE@UNDERARMOUR.COM
TEAM SPORTS NE / TEAMSPO RTSNE@UNDERARMOUR.COM

WEST

TEAM SPORTS WC / TEAMSPO RTSWC@UNDERARMOUR.COM
TEAM SPORTS SW / TEAMSPO RTS@UNDERARMOUR.COM

ALL TEAM SPORTS ORDERS AND QUESTIONS PLEASE USE THE FOLLOWING:

1.888.828.1547
Corporate Headquarters
1020 Hull Street
Baltimore, MD 21230

CORPORATE OFFICE HOURS OF OPERATION

Monday through Friday, 8:30am – 5:30pm, EST.

UNDER ARMOUR® B2B – ONLINE ORDERING

armourhouse.underarmour.com

- 24/7 access to check inventory and place orders
- Ability to track orders and shipments
- Priority product allocation
- Faster processing time

UNDER ARMOUR® B2B – SUPPORT

B2B_support@underarmour.com

UNDER ARMOUR® RETURN POLICY

Under Armour® stands behind its gear and EXPECTS nothing less than perfection. If you have received a defective product, an incorrect size, or an incorrect order, please contact us immediately for a return authorization number so that we can quickly process your return and ensure your satisfaction.

ALL RETURNS MUST BE COMPLETED WITHIN 30 DAYS OF RECEIPT AND MUST BE IN REASONABLE CONDITION. ALL RETURNS MUST HAVE THE RA# CLEARLY MARKED ON THE CARTON. ALL RETURNS ARE SUBJECT TO A 15% RE-STOCKING FEE.

Should you need to return or exchange an item, you MUST include your RA#, a copy of your invoice, and an explanation in writing as to why you are returning the item. Send your return to the marked address on your pack list. If you are exchanging merchandise, you are responsible for the cost of returning the product. Original shipping costs are non-refundable. All returned merchandise must be received in new, resalable condition.

ODH RETURNS:

Under Armour Returns
RA#
7030 Tradepoint Ave
Dock Door 69
Sparrows Point, MD 21219

RIALTO RETURNS:

Under Armour Returns
RA#
2510 W Walnut Ave
Rialto, CA 92376

NASHVILLE RETURNS:

Under Armour Returns
RA#
13 Athlete's Way
Mt Juliet, TN 37122

UNDER ARMOUR® CANCELLATION POLICY

Any request for cancellation of an order for UA products must be made, in writing, through the customer's UA Sales Representative. A request to cancel an order must be made more than 30 days before the customer's original desired ship date. All cancellations are subject to UA approval.

ALL PRICES SET FORTH HEREIN ARE SUBJECT TO CHANGE WITHOUT NOTICE.

© 2024 Under Armour®. All rights reserved. All trademarks, images, photographs, logos, and graphics are owned or controlled by Under Armour®.

Confidential and business proprietary information for internal Under Armour®, Inc. use only. Reproduction is strictly prohibited.

UNDER ARMOUR® PERFORMANCE
SPRING 2025